

List of pages in this Trip Kit

Trip Kit Index

Airport Information For RKPS

Terminal Charts For RKPS

Revision Letter For Cycle 16-2023

Change Notices

Notebook

General Information

Location: SACHEON KOR
ICAO/IATA: RKPS / HIN
Lat/Long: N35° 05.32', E128° 04.23'
Elevation: 25 ft

Airport Use: Joint-Use
Daylight Savings: Not Observed
UTC Conversion: -9:00 = UTC
Magnetic Variation: 8.0° W

Customs: No
Airport Type: IFR
Landing Fee: Yes
Control Tower: Yes
Jet Start Unit: No
LLWS Alert: No
Beacon: Yes
Traffic Pattern Altitude: 1700 ft (1675 ft AGL)

Sunrise: 2114 Z
Sunset: 0929 Z

Runway Information

Runway: 06L
Length x Width: 8999 ft x 151 ft
Surface Type: asphalt
TDZ-Elev: 17 ft
Lighting: Edge, ALS

Runway: 06R
Length x Width: 8999 ft x 151 ft
Surface Type: concrete
TDZ-Elev: 19 ft
Lighting: Edge, ALS

Runway: 24L
Length x Width: 8999 ft x 151 ft
Surface Type: concrete
TDZ-Elev: 24 ft
Lighting: Edge, ALS

Runway: 24R
Length x Width: 8999 ft x 151 ft
Surface Type: asphalt
TDZ-Elev: 19 ft
Lighting: Edge

Communication Information

ATIS: 126.225

ATIS: 22.547 Military

Sacheon Tower: 23.660 Military

Sacheon Tower: 30.540 Military

Sacheon Tower: 118.675

Sacheon Ground: 118.675

Sacheon Ground: 27.580 Military

Sacheon Approach: 135.400

Sacheon Approach: 34.470 Military

Sacheon Arrival: 23.790 Military

Sacheon Arrival: 24.490 Military

Sacheon Arrival: 28.125 Military

Sacheon Arrival: 134.400

Sacheon Arrival: 123.875

Sacheon Arrival: 38.400 Military

Sacheon Departure: 135.400

Sacheon Departure: 34.730 Military

Sacheon Service Radar: 135.400

Sacheon Service Radar: 23.080 Military

SACHEON TERMINAL CONTROL AREA

Sacheon App(R) 135.4

SPEED RESTRICTIONS WITHIN KOREAN AIRSPACE

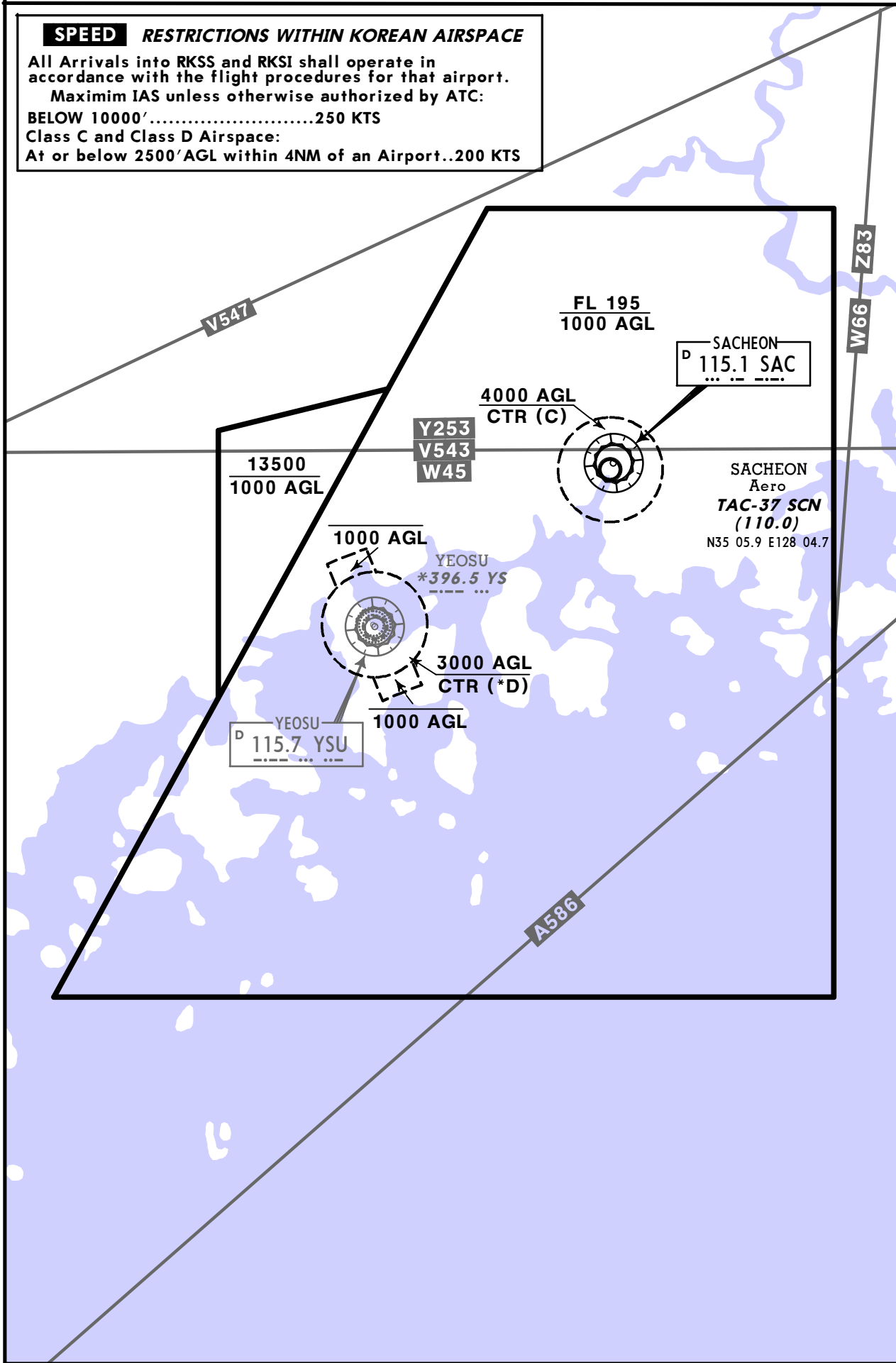
All Arrivals into RKSS and RKSJ shall operate in accordance with the flight procedures for that airport.

Maximum IAS unless otherwise authorized by ATC:

BELOW 10000'250 KTS

Class C and Class D Airspace:

At or below 2500' AGL within 4NM of an Airport..200 KTS



RKPS/HIN SACHEON

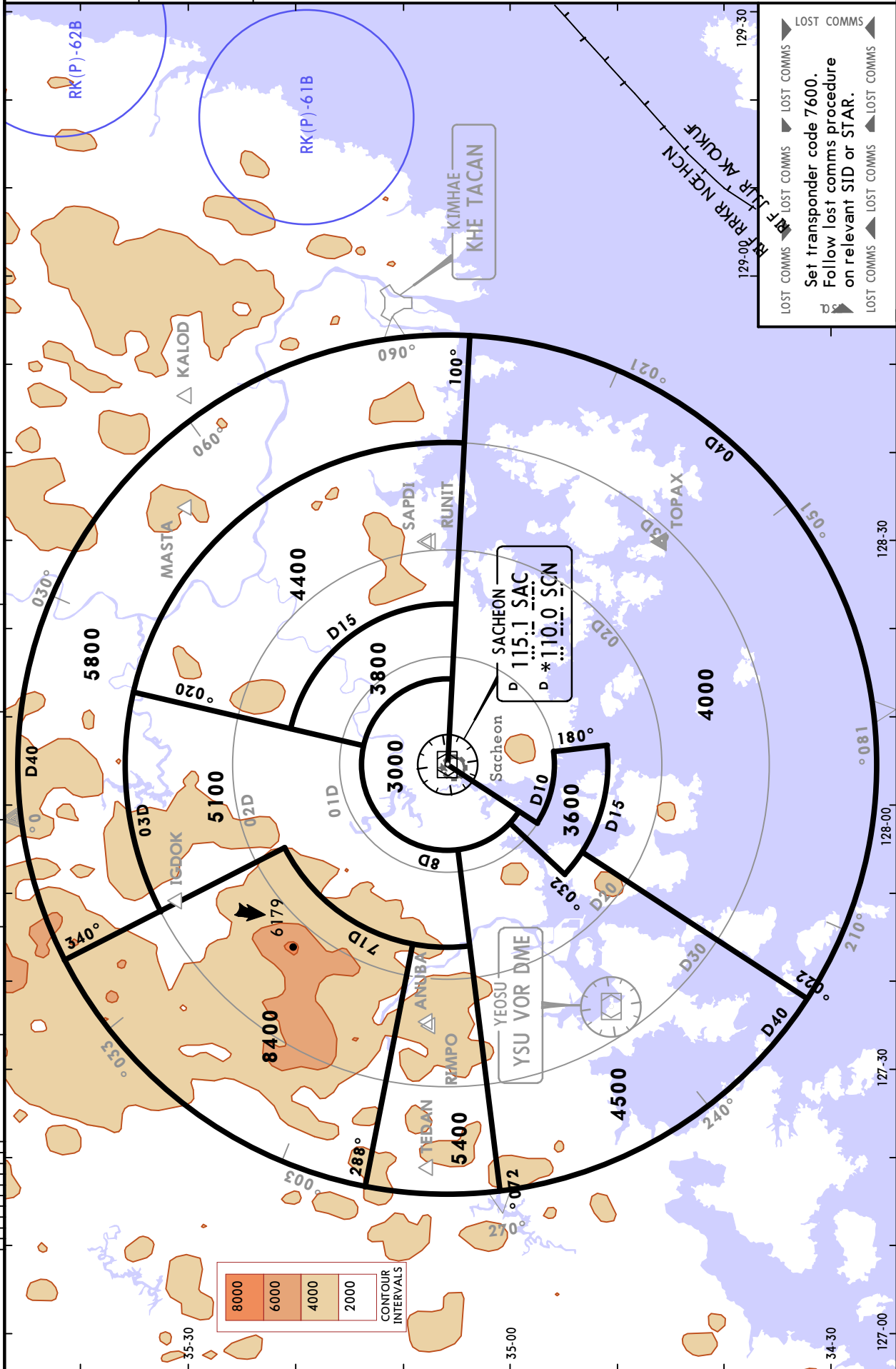


22 JUL 22 (10-1R)

SACHEON, KOREA

RADAR MINIMUM ALTITUDES

SACHEON Approach (R) 135.4	Apt Elev 25	Alt Set: hPa Trans level: FL140 Trans alt: 14000 1. Chart only to be used for cross-checking of altitudes assigned while under RADAR control. 2. Levels assigned by ATC include a correction for low temperature effect when necessary.
---	-----------------------	---



RADIO COMMUNICATION FAILURE PROCEDURE

IFR

1) GENERAL

- a) No person may take off unless two-way radio communications can be maintained with the Air Traffic Control.
- b) On recognition of communication failure during flight, squawk 7600 and if necessary to ensure safe altitude, climb to Minimum Safe Altitude or above to MAINTAIN obstacle clearance.

Then comply with the following procedures:

2) VMC

If the failure occurs in VFR conditions, or if VFR conditions are encountered after the failure, each pilot shall continue the flight under VFR and land as soon as practicable (based on the runway in use).

3) IMC

If the failure occurs in IFR conditions, or if paragraph 2 of this section cannot be complied with, each pilot shall continue the flight according to the following:

ARRIVAL

Rwy 06 in use

- 1) In VMC
 - The aircraft shall MAINTAIN VFR and make approach to land on Rwy 06L/R.
- 2) In IMC
 - The aircraft shall proceed to SOLYI IAF and execute (LOC/DME Rwy 06L, VOR/DME Rwy 06L, VOR/DME Rwy 06R) approach.

Rwy 24 in use

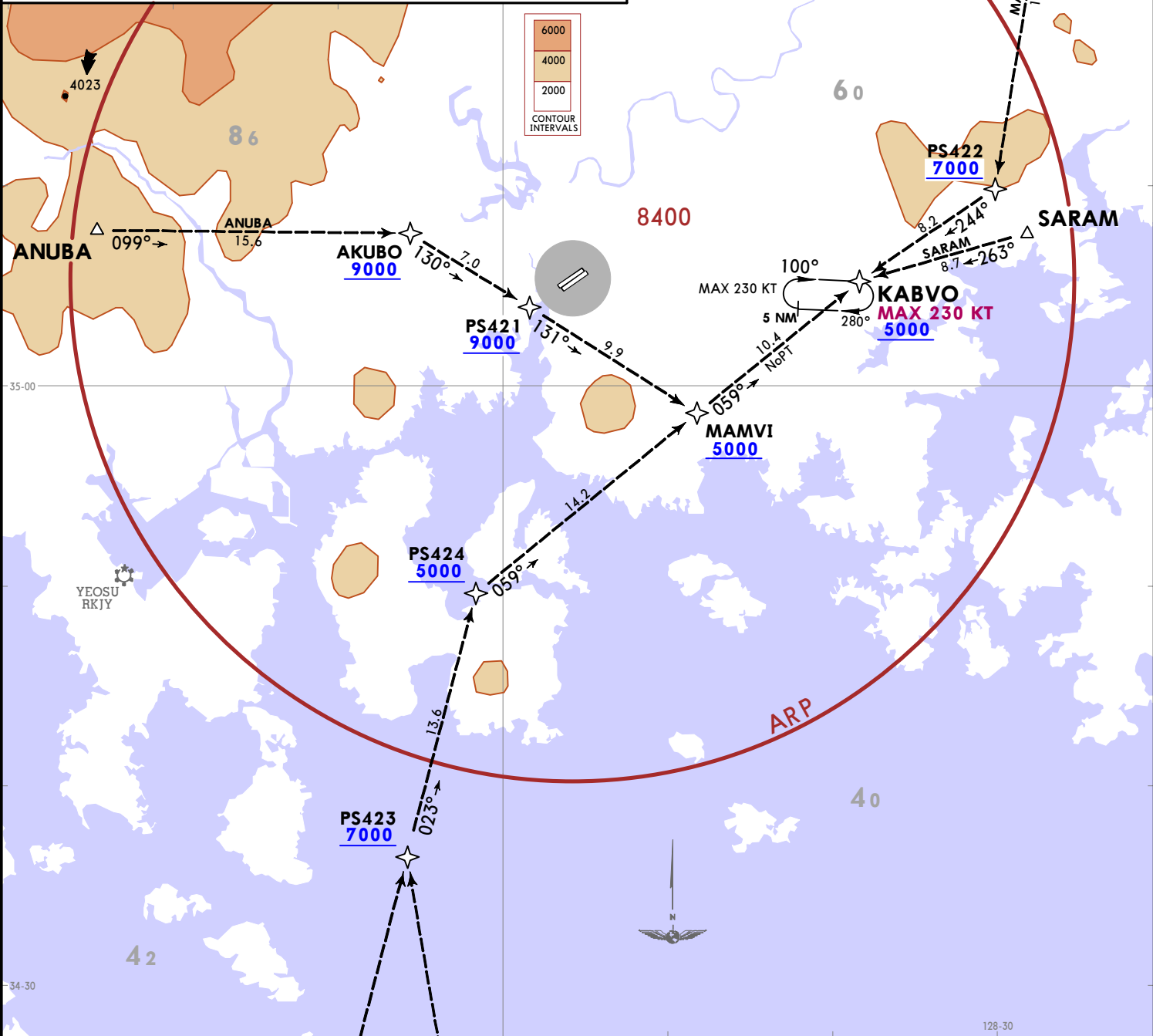
- 1) In VMC
 - The aircraft shall MAINTAIN VFR and make approach to land on Rwy 24L/R.
- 2) In IMC
 - The aircraft shall proceed to KABVO IAF and execute (ILS Rwy 24R, LOC/DME Rwy 24R, VOR/DME Rwy 24R, VOR/DME Rwy 24L) approach.
 - * If able Civil aircraft are to use Rwy 06L/24R.

CHANGES: New procedure at this airport.

RKPS/HIN
SACHON

*ATIS 126.225	Apt Elev 25	Alt Set: hPa Trans level: FL140 RNAV 1 operation GNSS required DME/DME/IRU not authorized 1. RADAR required. 2. Approach procedure not authorized via ibound without holding at KABVO for SARAM and MASTA transition. ATC clearance required.
-------------------------	-----------------------	--

KABVO 1 RNAV ARRIVAL
[KABVO1]
(RWYS 24L/R)



TRANSITIONS	
ANUBA	From ANUBA on track 099° to AKUBO and track 130° to PS421 at or above 9000, then track 131° to MAMVI at or above 5000, then track 059° to KABVO at or above 5000.
GOSBO	From GOSBO on track 023° to PS423 at or above 7000, then track 023° to PS424 and track 059° to MAMVI and track 059° to KABVO at or above 5000.
MASTA	From MASTA on track 198° to PS422 at or above 7000, then track 244° to KABVO at or above 5000.
NISAV	From NISAV on track 359° to PS423 at or above 7000, then track 023° to PS424 and track 059° to MAMVI and track 059° to KABVO at or above 5000.
SARAM	From SARAM on track 263° to KABVO at or above 5000.
LANDING	
Except RNP approach following transition routes.	

KABVO 1 RNAV ARRIVAL
[KABVO1]
(RWYS 24L/R)

7 JUL 23 10-2A
JEPPESSEN SACHON, KOREA
EFF 12 JUL 1600Z RNAV STAR

© JEPPESSEN, 2023. ALL RIGHTS RESERVED.

RKPS/HIN
SACHEON

JEPPESSEN

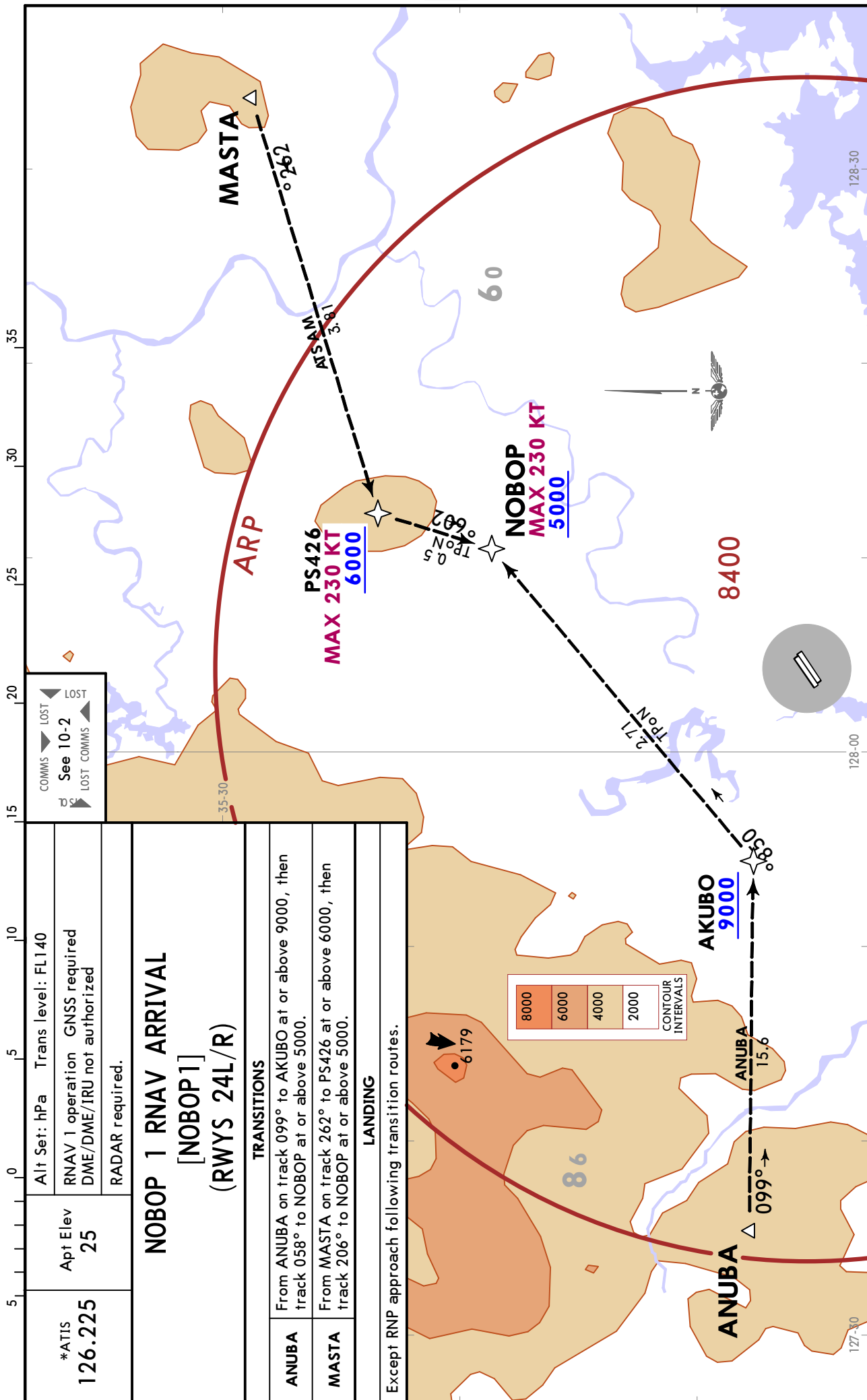
SACHEON, KOREA

7 JUL 23

10-2B

Eff 12 Jul 1600Z

RNAV STAR



*ATIS 126.225	Apt Elev 25	Alt Set: hPa Trans level: FL140
RNAV 1 operation GNSSE required DME/DME/IRU not authorized		
RADAR required.		
NOBOP 1 RNAV ARRIVAL [NOBOP1] (RWYS 24L/R)		
TRANSITIONS		
ANUBA	From ANUBA on track 099° to AKUBO at or above 9000, then track 058° to NOBOP at or above 5000.	
MASTA	From MASTA on track 262° to PS426 at or above 6000, then track 206° to NOBOP at or above 5000.	
LANDING		
Except RNP approach following transition routes.		

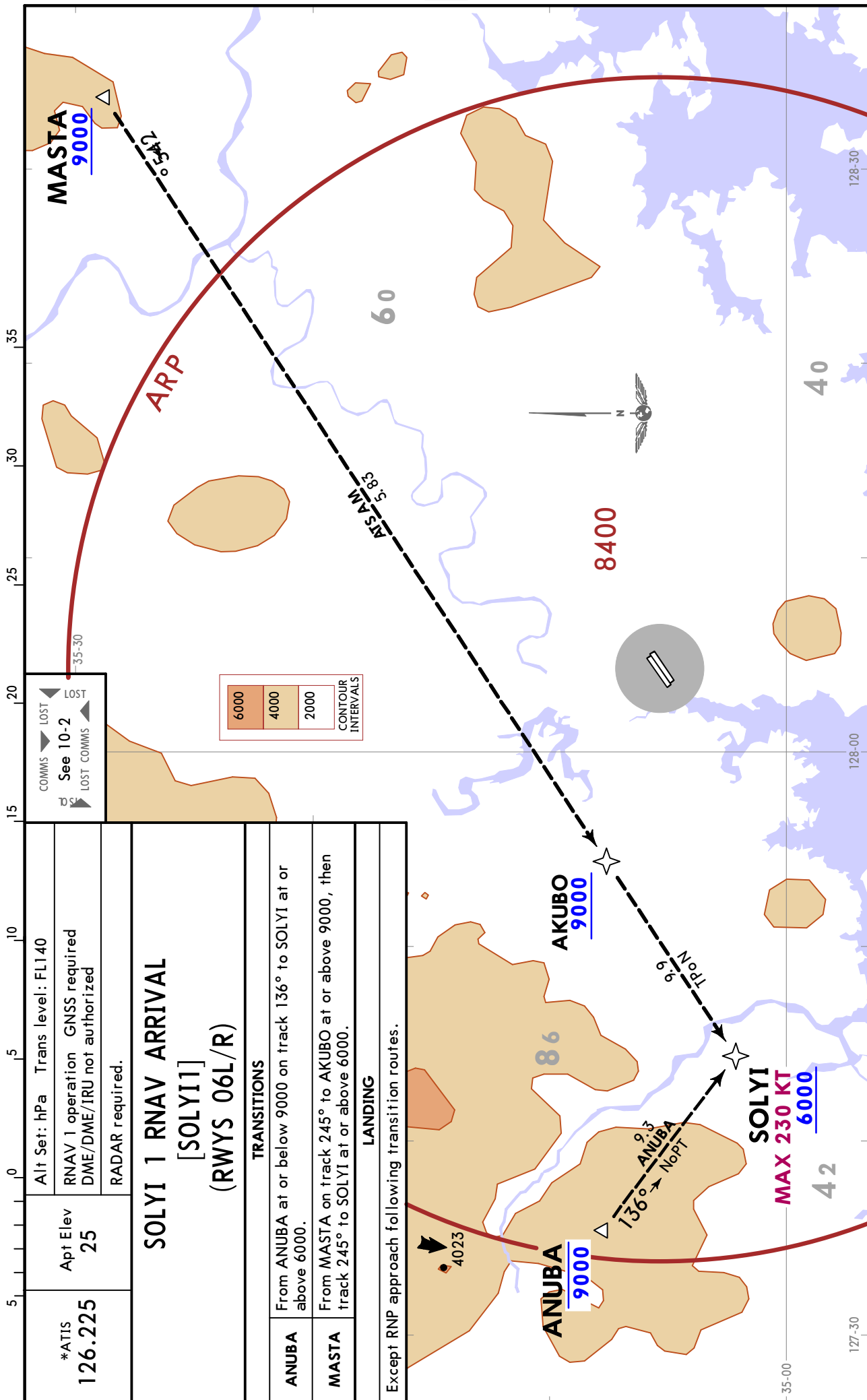
CHANGES: New procedure at this airport.

© JEPPESSEN, 2023. ALL RIGHTS RESERVED.

RKPS/HIN
SACHEON

JEPESEN
7 JUL 23 **10-2C** Eff 12 Jul 1600Z

SACHEON, KOREA
RNAV STAR



COMMS LOST LOST
See 10-2
LOST COMMS LOST

6000
4000
2000
CONTOUR INTERVALS

*ATIS 126.225	Apt Elev 25	Alt Set: hPa Trans level: FL140 RNAV 1 operation GNSS required DME/DME/IRU not authorized RADAR required.
SOLYI 1 RNAV ARRIVAL [SOLYI1] (RWYS 06L/R)		
TRANSITIONS		
ANUBA	From ANUBA at or below 9000 on track 136° to SPLYI at or above 6000.	
MASTA	From MASTA on track 245° to AKUBO at or above 9000, then track 245° to SPLYI at or above 6000.	
LANDING		
Except RNP approach following transition routes.		

CHANGES: New procedure at this airport.

© JEPESEN, 2023. ALL RIGHTS RESERVED.

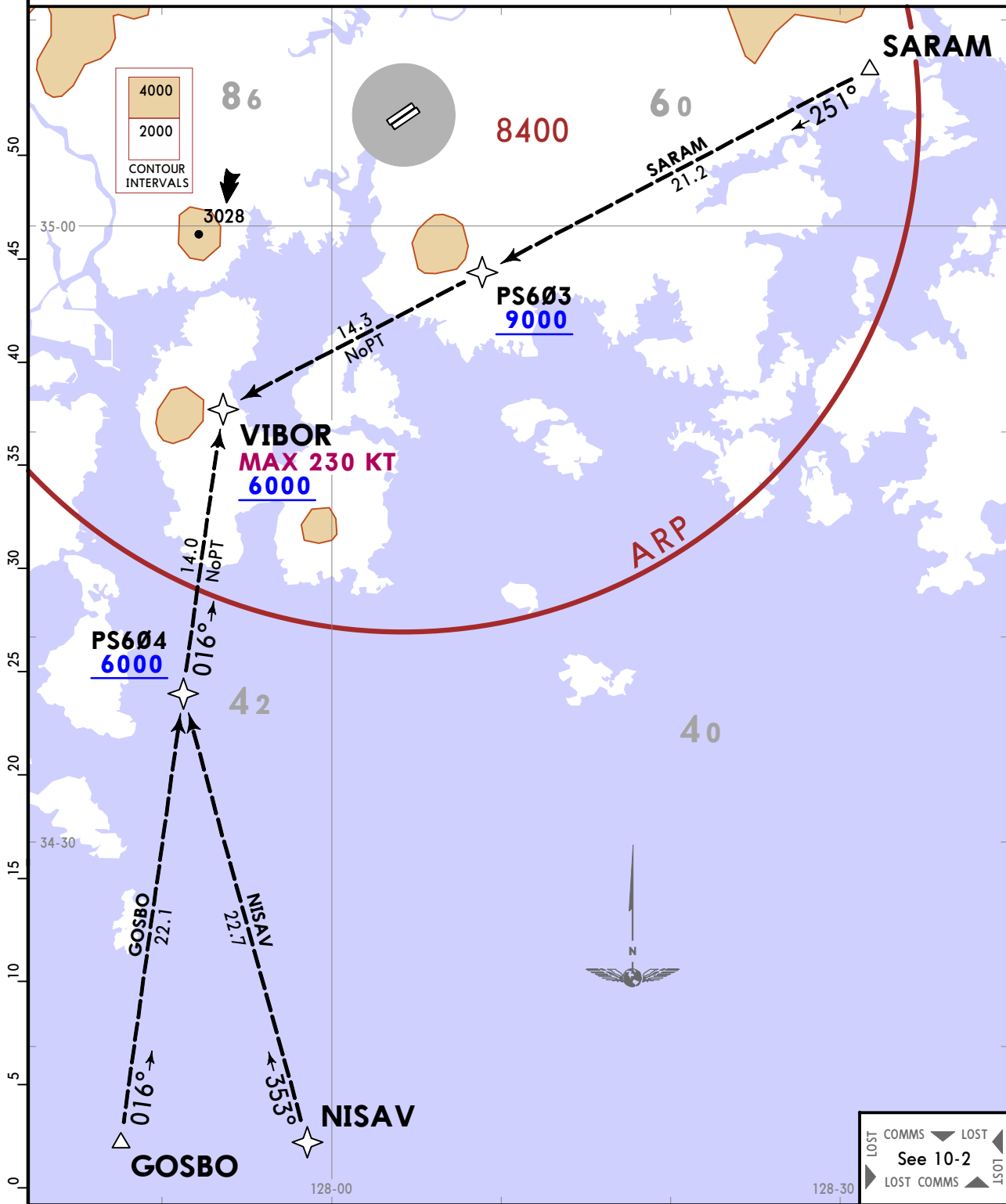
RKPS/HIN
SACHEON

JEPPESEN
7 JUL 23 **(10-2D)** Eff 12 Jul 1600Z

SACHEON, KOREA
RNAV STAR

*ATIS 126.225	Apt Elev 25	Alt Set: hPa Trans level: FL140
		RNAV 1 operation GNSS required DME/DME/IRU not authorized
		RADAR required.

VIBOR 1 RNAV ARRIVAL
[VIBOR1]
(RWYS 06L/R)



TRANSITIONS

GOSBO	From GOSBO on track 016° to PS604 and track 016° to VIBOR at or above 6000.
NISAV	From NISAV on track 353° to PS604 and track 016° to VIBOR at or above 6000.
SARAM	From SARAM on track 251° to PS603 at or above 9000, then track 251° to VIBOR at or above 6000.

LANDING

Expect RNP approach following transition routes.

RADIO COMMUNICATION FAILURE PROCEDURE

IFR

1) GENERAL

- a) No person may take off unless two-way radio communications can be maintained with the Air Traffic Control.
- b) On recognition of communication failure during flight, squawk 7600 and if necessary to ensure safe altitude, climb to Minimum Safe Altitude or above to MAINTAIN obstacle clearance.

Then comply with the following procedures:

2) VMC

If the failure occurs in VFR conditions, or if VFR conditions are encountered after the failure, each pilot shall continue the flight under VFR and land as soon as practicable (based on the runway in use).

3) IMC

If the failure occurs in IFR conditions, or if paragraph 2 of this section cannot be complied with, each pilot shall continue the flight according to the following:

DEPARTURE

a) Under Pilot Navigation

Runway 06L/06R in use

1) SACHEON 1:

Climb heading 064° to SAC D5 thence, climb to 8000 via the following transition routes.

- a) ANUBA TRANSITION: LEFT turn heading 310° to cross SAC R020 and LEFT turn heading 240° to SAC R283 and SAC R283 to ANUBA.
- b) SAPDI TRANSITION: RIGHT turn heading 130° to intercept SAC R093 and SAC R093 to SAPDI.
- c) TOPAX TRANSITION: RIGHT turn heading 190° to intercept SAC R142 and SAC R142 to TOPAX.
- d) GOSBO TRANSITION: RIGHT turn heading 250° to intercept SAC R204 and SAC R204 to GOSBO.
- e) ENGOT TRANSITION: RIGHT turn heading 190° to intercept SAC R138 and SAC R138 to ENGOT.
- f) POVOR TRANSITION: RIGHT turn heading 250° to intercept SAC R207 and SAC R207 to POVOR.

2) VONDU 1 RNAV:

Take-off RWY 06L: Climb course 064° to VONDU. Climb to 8000 via the following transition routes.

Take-off RWY 06R: Climb course 063° to VONDU. Climb to 8000 via the following transition routes.

- a) ANUBA TRANSITION: From VONDU on track 334° to PS061 and track 258° to PS062 and track 258° to ANUBA.
- b) MASTA TRANSITION: From VONDU on track 052° to MASTA.
- c) SARAM TRANSITION: From VONDU on track 102° to SARAM.
- d) GOSBO TRANSITION: From VONDU on track 153° to BOTRU and track 209° to PS151 and track 218° to PS152 and track 218° to GOSBO.
- d) POVOR TRANSITION: From VONDU on track 153° to BOTRU and track 209° to PS151 and track 218° to PS152 and track 224° to POVOR.

Runway 24L/24R in use

3) SACHEON 2:

Climb heading 244° to SAC D5 thence, climb to 8000 via the following transition routes.

- a) ANUBA TRANSITION: RIGHT turn heading 330° to intercept SAC R283 and SAC R283 to ANUBA.
- b) GOSBO TRANSITION: LEFT turn heading 150° to intercept SAC R204 and SAC R204 to GOSBO.
- c) TOPAX TRANSITION: LEFT turn heading 050° to intercept SAC R142 and SAC R142 to TOPAX.
- d) SAPDI TRANSITION: LEFT turn heading 050° to intercept SAC R093 and SAC R093 to SAPDI.
- e) ENGOT TRANSITION: LEFT turn heading 050° to intercept SAC R138 and SAC R138 to ENGOT.
- f) POVOR TRANSITION: LEFT turn heading 150° to intercept SAC R207 and SAC R207 to POVOR.

4) AKLOG 1 RNAV:

Take-off RWY 24L: Climb course 244° to AKLOG. Climb to 8000 via the following transition routes.

Take-off RWY 24R: Climb course 243° to AKLOG. Climb to 8000 via the following transition routes.

- a) ANUBA TRANSITION: From AKLOG on track 333° to PS241 and track 274° to ANUBA.
- b) MASTA 1 TRANSITION: From AKLOG on track 333° to PS241 and track 055° to PS242 at or above 8000, then track 070° to MASTA.
- c) MASTA 2 TRANSITION: From AKLOG on track 154° to PS243 at or above 6000, then track 064° to BOTRU and track 037° to PS244 and track 037° to MASTA.
- d) SARAM TRANSITION: From AKLOG on track 154° to PS243 at or above 6000, then track 064° to BOTRU and track 074° to SARAM.
- e) GOSBO TRANSITION: From AKLOG on track 154° to PS243 at or above 6000, then track 171° to PS151 and track 218° to PS152 and track 218° to GOSBO.
- f) POVOR TRANSITION: From AKLOG on track 154° to PS243 at or above 6000, then track 171° to PS151 and track 218° to PS152 and track 224° to POVOR.

- 5) Proceed by the direct route from the point of radio failure to the fix, route, or airway specified in the vector clearance;
- 6) In the absence of an assigned route, proceed by the route that ATC will advise through the forthcoming clearance; or
- 7) In the absence of an assigned route or a route that ATC will advise through the forthcoming clearance, proceed by the route filed in the flight plan; and
- 8) MAINTAIN minimum enroute altitude (MEA) or the altitude/flight level cleared in the last ATC clearance received, whichever is higher, for 20 minutes; then
- 9) Continue the flight with altitude/flight level filed in the flight plan.

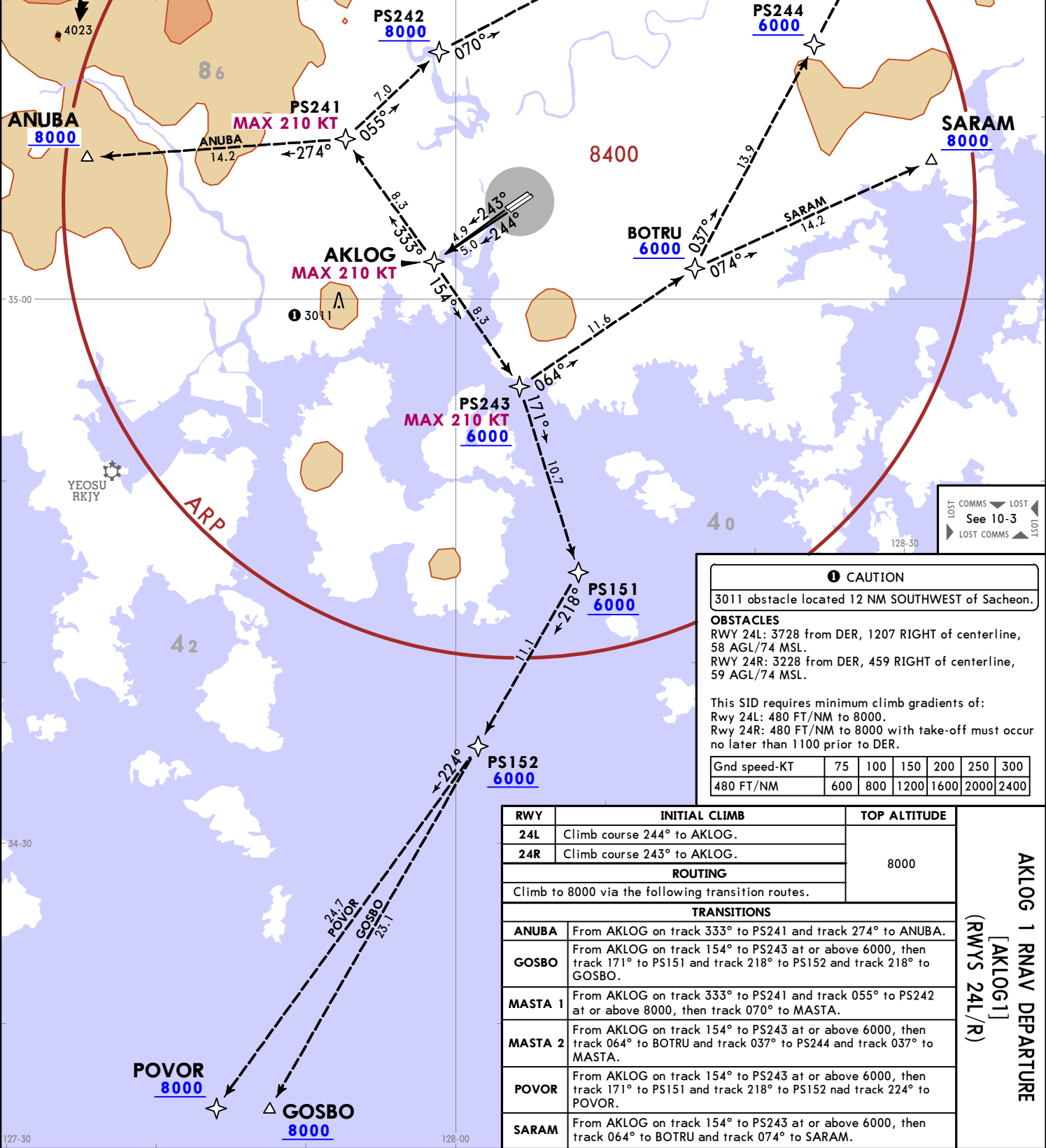
CHANGES: New procedure at this airport.

RKPS/HIN
SACHEON

SACHEON Departure (R) 135.4	Apt Elev 25	Trans alt: 14000
		RNAV 1 operation GNSS required DME/DME/IRU not authorized
1. RADAR required. 2. RWY 24R, at least 35 AGL over DER.		

AKLOG 1 RNAV DEPARTURE
[AKLOG1]
(RWYS 24L/R)

SPEED RESTRICTION
 Do not exceed 210 KT until PS241, PS243.



CAUTION
3011 obstacle located 12 NM SOUTHWEST of Sacheon.

OBSTACLES
 RWY 24L: 3728 from DER, 1207 RIGHT of centerline, 58 AGL/74 MSL.
 RWY 24R: 3228 from DER, 459 RIGHT of centerline, 59 AGL/74 MSL.

This SID requires minimum climb gradients of:
 Rwy 24L: 480 FT/NM to 8000.
 Rwy 24R: 480 FT/NM to 8000 with take-off must occur no later than 1100 prior to DER.

Gnd speed-KT	75	100	150	200	250	300
480 FT/NM	600	800	1200	1600	2000	2400

RWY	INITIAL CLIMB	TOP ALTITUDE
24L	Climb course 244° to AKLOG.	8000
24R	Climb course 243° to AKLOG.	
ROUTING		
Climb to 8000 via the following transition routes.		
TRANSITIONS		
ANUBA	From AKLOG on track 333° to PS241 and track 274° to ANUBA.	
GOSBO	From AKLOG on track 154° to PS243 at or above 6000, then track 171° to PS151 and track 218° to PS152 and track 218° to GOSBO.	
MASTA 1	From AKLOG on track 333° to PS241 and track 055° to PS242 at or above 8000, then track 070° to MASTA.	
MASTA 2	From AKLOG on track 154° to PS243 at or above 6000, then track 064° to BOTRU and track 037° to PS244 and track 037° to MASTA.	
POVOR	From AKLOG on track 154° to PS243 at or above 6000, then track 171° to PS151 and track 218° to PS152 nad track 224° to POVOR.	
SARAM	From AKLOG on track 154° to PS243 at or above 6000, then track 064° to BOTRU and track 074° to SARAM.	

AKLOG 1 RNAV DEPARTURE
 [AKLOG1]
 (RWYS 24L/R)

7 JUL 23
 10-3A
 JEPPESEN SACHEON, KOREA
 EFF 12 JUL 1600Z
 RNAV SID

© JEPPESEN, 2023. ALL RIGHTS RESERVED.

RKPS/HIN SACHEON



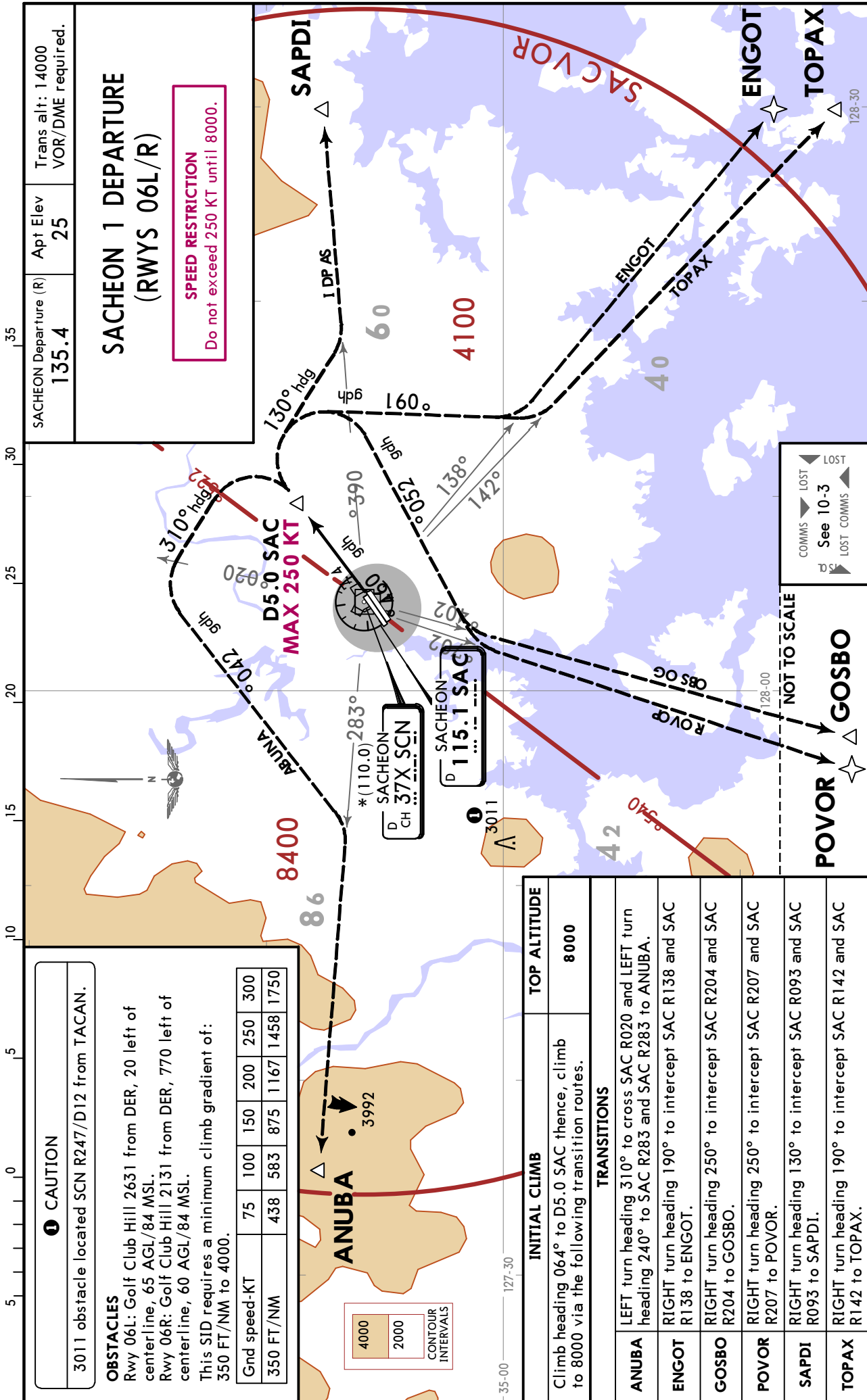
SACHEON, KOREA

7 JUL 23

10-3B

Eff 12 Jul 1600Z

SID



RKPS/HIN SACHEON



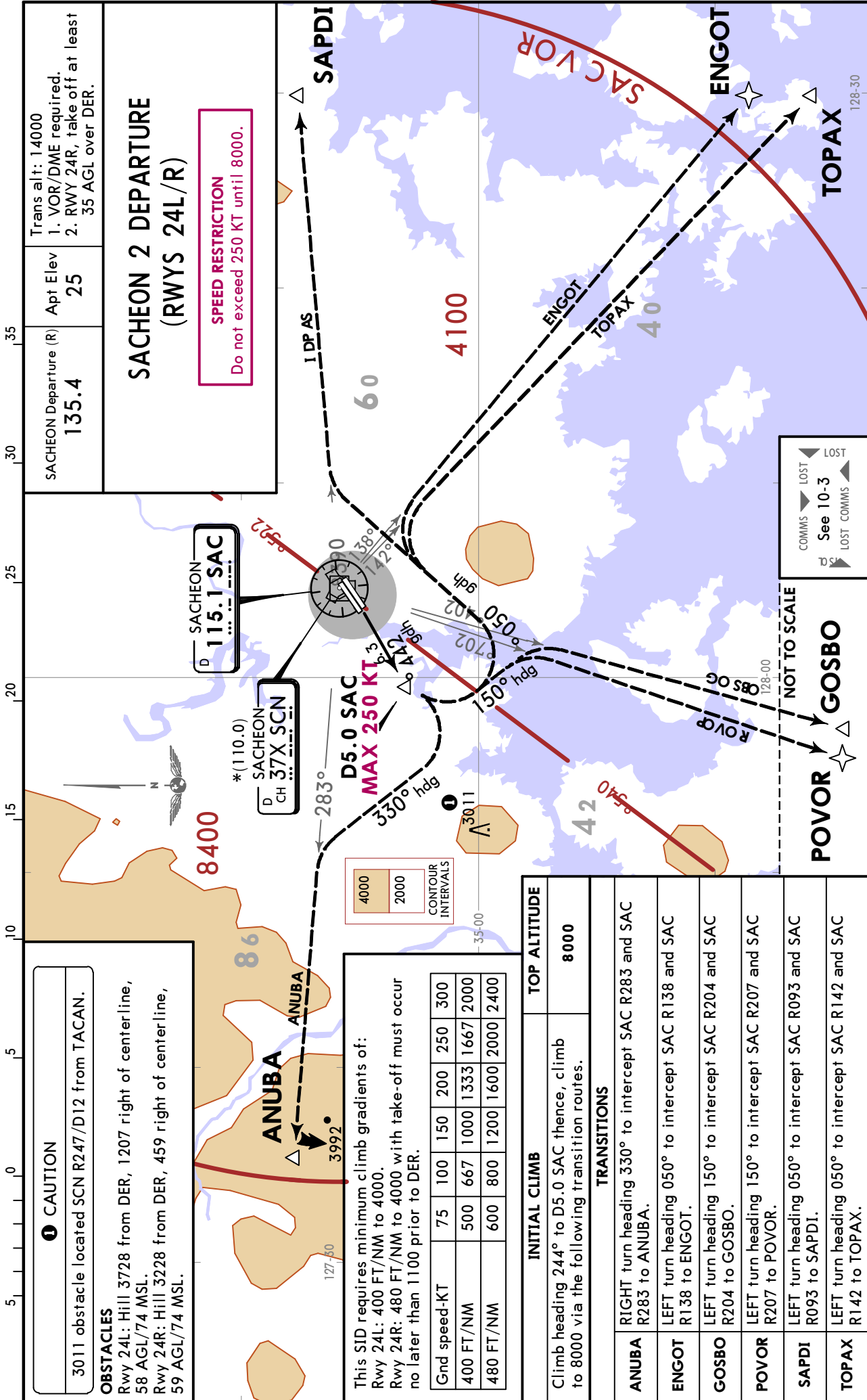
SACHEON, KOREA

7 JUL 23

10-3C

Eff 12 Jul 1600Z

SID



RKPS/HIN
SACHEON

JEPPESSEN

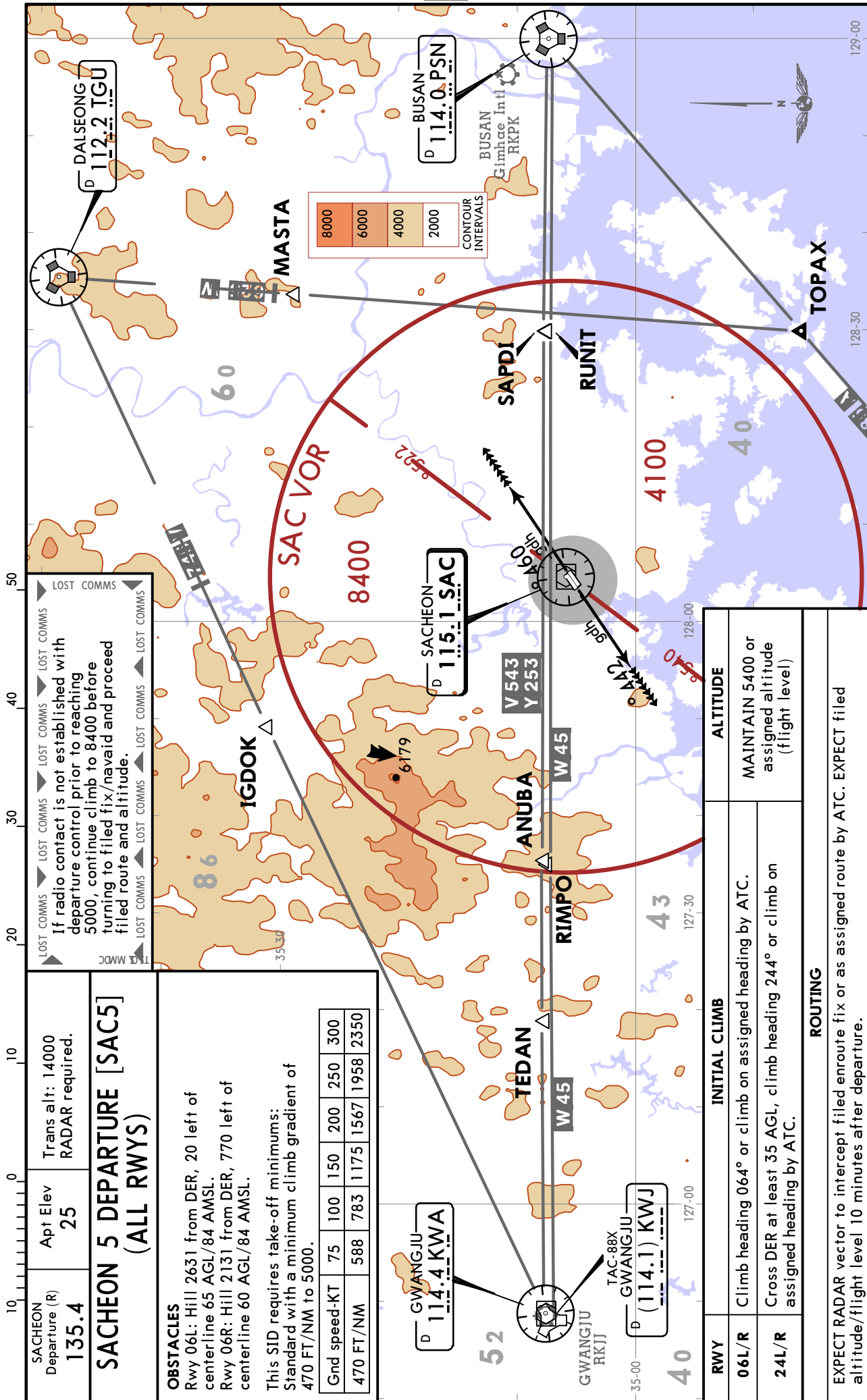
SACHEON, KOREA

7 JUL 23

10-3D

Eff 12 Jul 1600Z

SID



SACHEON
Departure (R)
135.4

Trans alt: 14000
RADAR required.

SACHEON 5 DEPARTURE [SAC5]
(ALL RWYS)

OBSTACLES
Rwy 06L: Hill 2631 from DER, 20 left of centerline 65 AGL/84 AMSL.
Rwy 06R: Hill 2131 from DER, 770 left of centerline 60 AGL/84 AMSL.

This SID requires take-off minimums:
Standard with a minimum climb gradient of 470 FT/NM to 5000.

Grnd speed-KT	75	100	150	200	250	300
470 FT/NM	588	783	1175	1567	1958	2350

LOST COMMS

If radio contact is not established with departure control prior to reaching 5000, continue climb to 8400 before turning to filed fix/navaid and proceed filed route and altitude.

RWY	INITIAL CLIMB	ALTITUDE
06L/R	Climb heading 064° or climb on assigned heading by ATC.	MAINTAIN 5400 or assigned altitude (flight level)
24L/R	Cross DER at least 35 AGL, climb heading 244° or climb on assigned heading by ATC.	
ROUTING		
EXPECT RADAR vector to intercept filed enroute fix or as assigned route by ATC. EXPECT filed altitude/flight level 10 minutes after departure.		

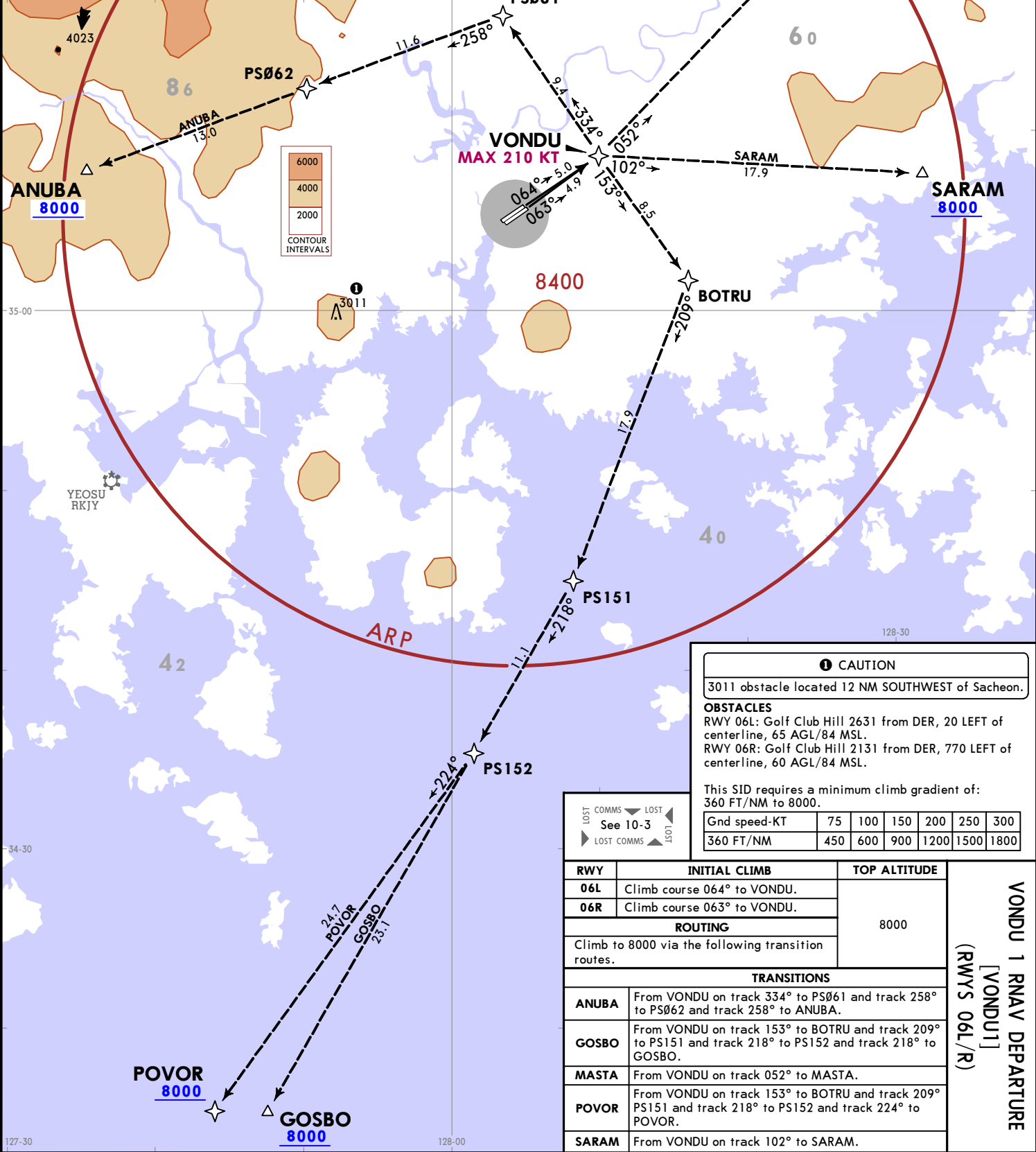
CHANGES: New procedure at this airport.

RKPS/HIN
SACHEON

SACHEON Departure (R) 135.4	Apt Elev 25	Trans alt: 14000
		RNAV 1 operation GNSSE required DME/DME/IRU not authorized RADAR required.

VONDU 1 RNAV DEPARTURE
[VONDU1]
(RWYS 06L/R)

SPEED RESTRICTION
Do not exceed 210 KT until VONDU.



CAUTION
3011 obstacle located 12 NM SOUTHWEST of Sacheon.

OBSTACLES
RWY 06L: Golf Club Hill 2631 from DER, 20 LEFT of centerline, 65 AGL/84 MSL.
RWY 06R: Golf Club Hill 2131 from DER, 770 LEFT of centerline, 60 AGL/84 MSL.

This SID requires a minimum climb gradient of: 360 FT/NM to 8000.

Gnd speed-KT	75	100	150	200	250	300
360 FT/NM	450	600	900	1200	1500	1800

LOST COMMS See 10-3

RWY	INITIAL CLIMB	TOP ALTITUDE
06L	Climb course 064° to VONDU.	8000
06R	Climb course 063° to VONDU.	
ROUTING		
Climb to 8000 via the following transition routes.		
TRANSITIONS		
ANUBA	From VONDU on track 334° to PS061 and track 258° to PS062 and track 258° to ANUBA.	
GOSBO	From VONDU on track 153° to BOTRU and track 209° to PS151 and track 218° to PS152 and track 218° to GOSBO.	
MASTA	From VONDU on track 052° to MASTA.	
POVOR	From VONDU on track 153° to BOTRU and track 209° to PS151 and track 218° to PS152 and track 224° to POVOR.	
SARAM	From VONDU on track 102° to SARAM.	

VONDU 1 RNAV DEPARTURE
[VONDU1]
(RWYS 06L/R)

7 JUL 23 10-3E
JEPPESSEN SACHEON, KOREA
EFF 12 JUL 1600Z
RNAV SID

© JEPPESSEN, 2023. ALL RIGHTS RESERVED.

RKPS/HIN

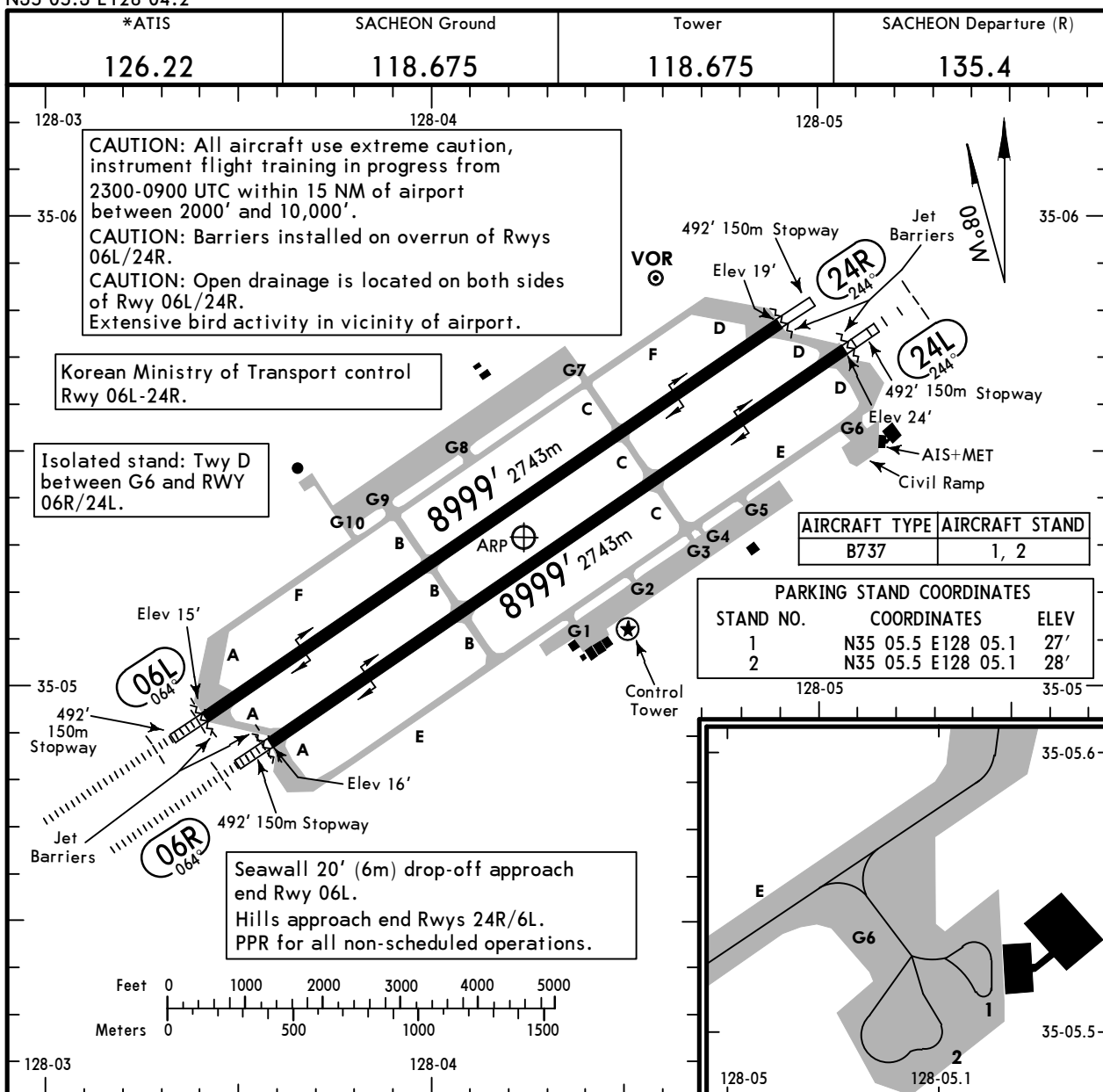
Apt Elev **25'**
N35 05.3 E128 04.2



9 JUN 23 **(10-9)** Eff 14 Jun 1600Z

SACHEON, KOREA

SACHEON



ADDITIONAL RUNWAY INFORMATION

RWY		USABLE LENGTHS			WIDTH
		Threshold	Glide Slope	TAKE-OFF	
06R	HIRL(60m) ① ALSF-I PAPI (angle 3.0°)				151' 46m
	24L HIRL(60m) ② SSALS PAPI (angle 3.0°)				
06L	HIRL(60m) ① ALSF-I PAPI (angle 3.7°)				151' 46m
	24R HIRL(60m) PAPI (angle 3.2°)		8034' 2449m		

- ① length 762m
- ② length 304m

TERPS

TAKE-OFF

① Available Landing Minimums

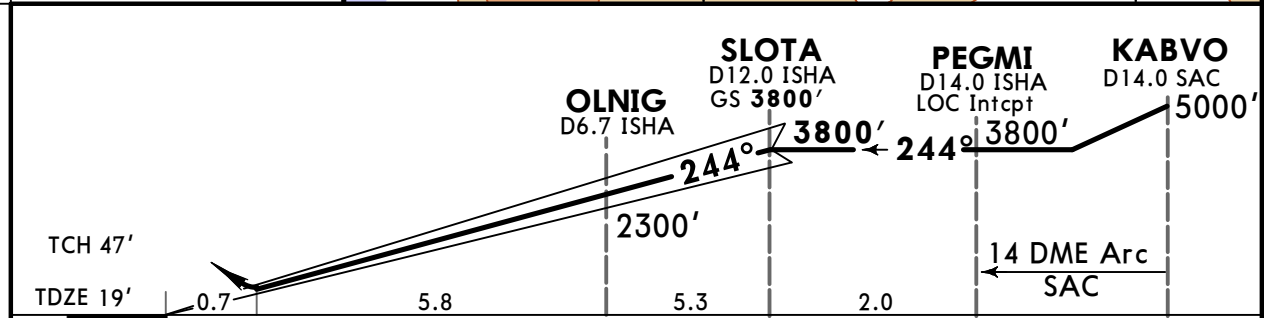
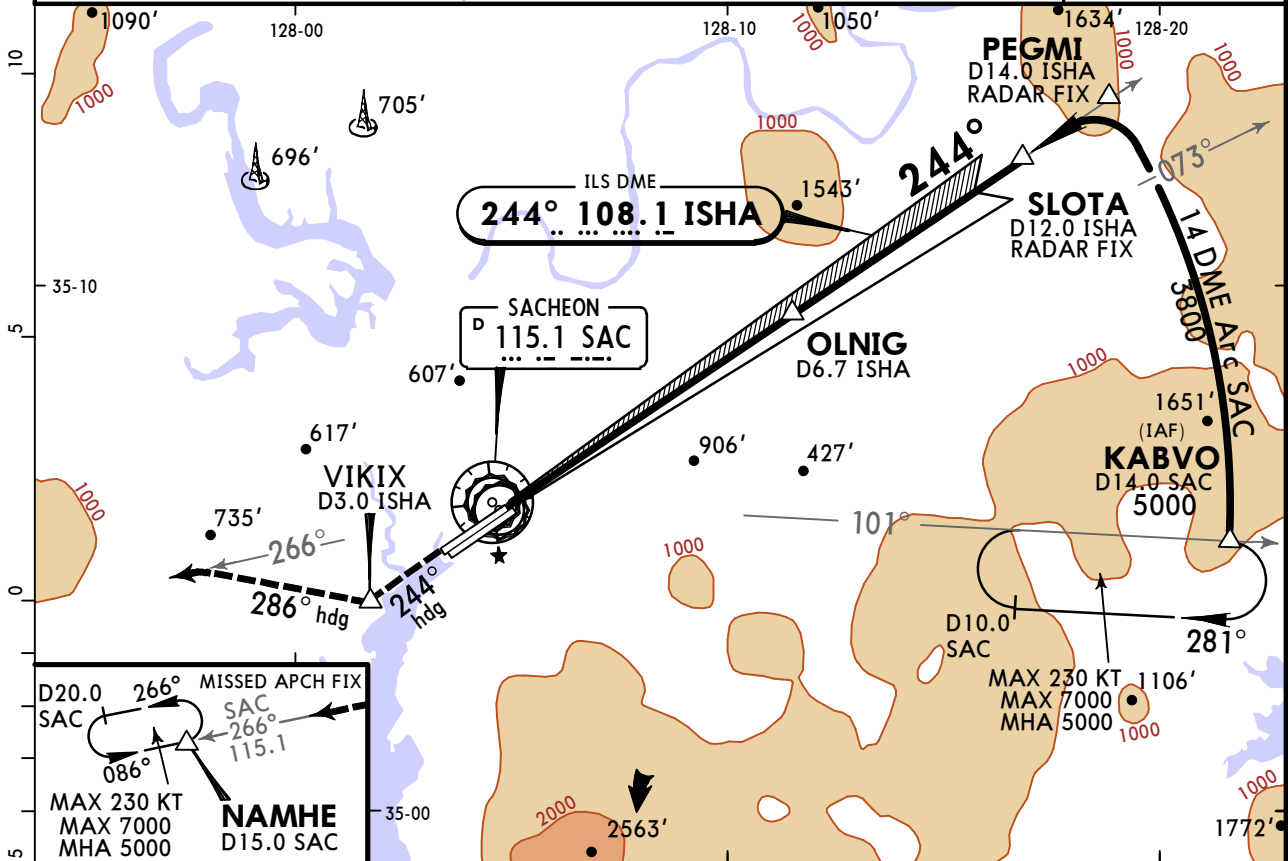
① All aircraft - When departing using RWY 24L/R, maintain 35' AGL or above over DER.

RKPS/HIN SACHEON

JEPESEN
9 JUN 23 (11-1) Eff 14 Jun 1600Z

SACHEON, KOREA ILS Rwy 24R

*ATIS 126.22	SACHEON Approach (R) 135.4	SACHEON Tower 118.675	Ground 118.675												
LOC ISHA 108.1	Final Apch Crs 244°	SLOTA 3800' (3781')	DA(H) 317' (298')												
Apt Elev 25' TDZE 19'			<p>MSA SAC VOR</p>												
<p>MISSED APCH: Climb to 6000' via heading 244° to VIKIX/D3.0 ISHA, then climbing RIGHT turn heading 286°, then track outbound on SAC VOR R-266 to NAMHE and hold, continue climb-in-hold to 6000' or as directed by ATC.</p> <p>CAUTION: Missed Approach Minimum climb rate to 4000'.</p> <table border="1"> <tr> <td>Gnd speed-Kts</td> <td>60</td> <td>120</td> <td>180</td> <td>240</td> <td>300</td> </tr> <tr> <td>Ft per Min</td> <td>320</td> <td>630</td> <td>940</td> <td>1260</td> <td>1570</td> </tr> </table>				Gnd speed-Kts	60	120	180	240	300	Ft per Min	320	630	940	1260	1570
Gnd speed-Kts	60	120	180	240	300										
Ft per Min	320	630	940	1260	1570										
Alt Set: hPa		TDZ Elev: 1 hPa	Trans level: FL140	Trans alt: 14000'											
<p>1. Radar or VOR/DME required. 2. CAUTION: 3011' obstacle located R-247/D12.0 SAC VOR. 3. VGSI and descent angles not coincident (VGSI 3.2° TCH 56'). 4. Use ISHA DME when on the localizer course. 5. Initial segment (14 DME Arc SAC) not authorized for CAT E aircraft. Expect radar vector to PEGMI.</p>															



Gnd speed-Kts	70	90	100	120	140	160	PAPI	6000' via 244° hdg	D3.0 ISHA
GS	3.20°	396	510	566	679	793			

TERPS STRAIGHT-IN LANDING
ILS
DA(H) **317'** (298')

A	300'- R45 or V7/8
B	
C	
D	
E	

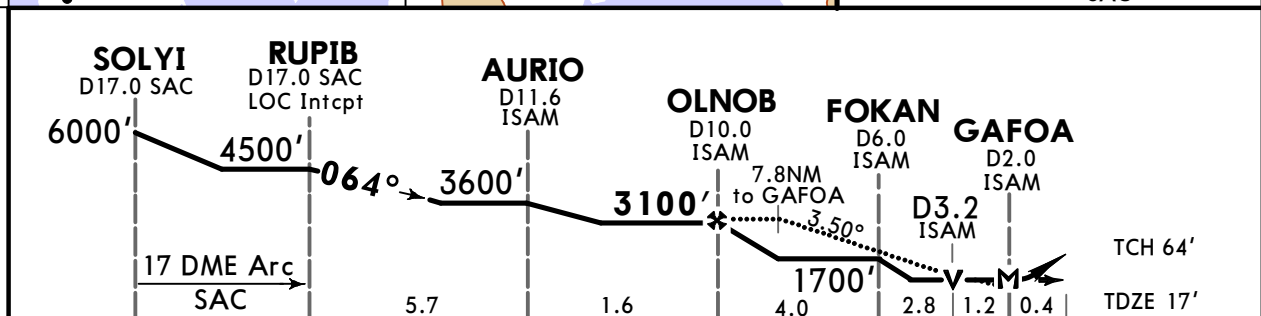
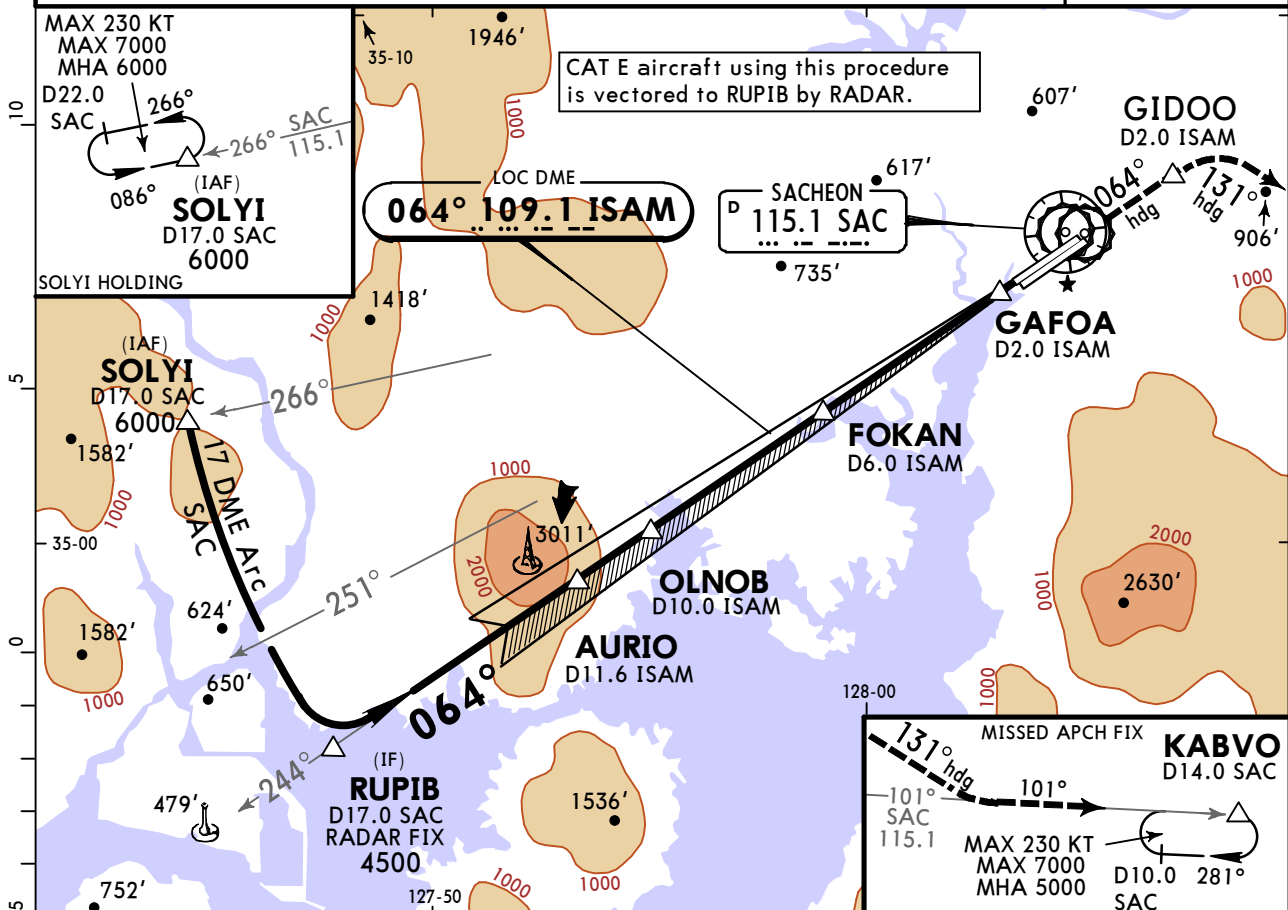
CHANGES: Bearings, new AOM concept.

RKPS/HIN SACHEON

9 JUN 23
Eff 14 Jun 1600Z (11-2)

SACHEON, KOREA LOC DME Rwy 06L

*ATIS 126.22		SACHEON Approach (R) 135.4		SACHEON Tower 118.675		Ground 118.675	
LOC ISAM 109.1	Final Apch Crs 064°	OLNOB 3100' (3083')	MDA(H) 700' (683')	Apt Elev 25' TDZE 17'			
MISSED APCH: Climb to 5000' via heading 064° to GIDOO, then RIGHT turn heading 131° to intercept outbound SAC VOR R-101 and track on SAC VOR R-101 to KABVO and hold, continue climb-in-hold to 5000', or as directed by ATC.							
Alt Set: hPa		TDZ Elev: 1 hPa		Trans level: FL140		Trans alt: 14000'	
1. VOR/DME or radar required. 2. Caution: 3011' obstacle located R-247/D12.0 SAC VOR. 3. VGSI and descent angles not coincident (VGSI 3.7° TCH 60'). Use ISAM DME when on the localizer course.							
MSA SAC VOR							



Gnd speed-Kts	70	90	100	120	140	160	PAPI ALSF-I	5000'	064° ↑ via hdg	GIDOO
Descent Angle	3.50°	434	557	619	743	991				
MAP at GAFOA										

TERPS		STRAIGHT-IN LANDING			CIRCLE-TO-LAND Not Authorized Southeast of Rwy 06-24		
		MDA(H) 700' (683')					
		ALS out			Max Kts		
A	700'- R40 or V3/4	700'- R55 or V1			90	800' (775')	800'- V1
B					120	900' (875')	900'- V1 1/4
C					140	1000' (975')	1000'- V3
D	700'- V1 1/2	700'- V2			165		
E					E	1120' (1095')	1100'- V3

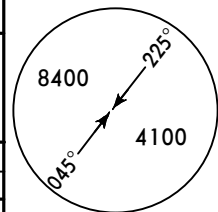
RKPS/HIN SACHEON

9 JUN 23
Eff 14 Jun 1600Z

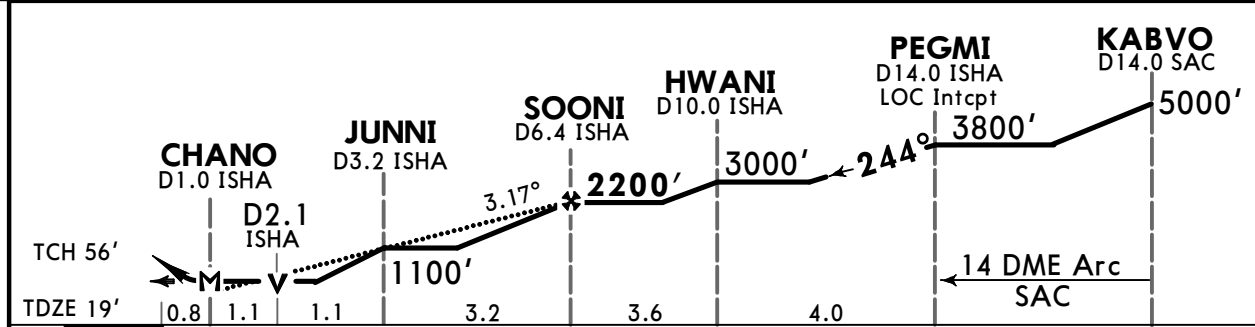
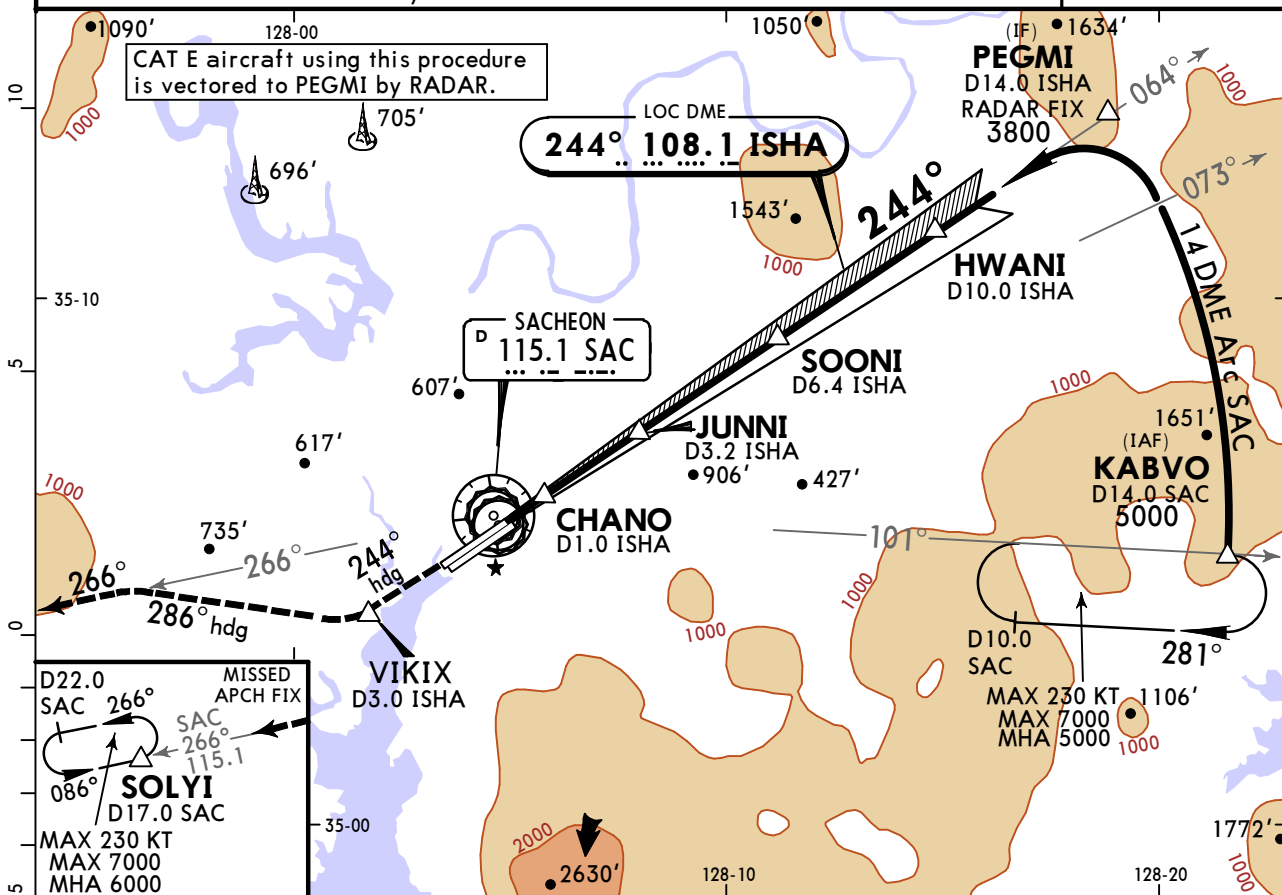
11-3

SACHEON, KOREA LOC DME Rwy 24R

*ATIS 126.22	SACHEON Approach (R) 135.4		SACHEON Tower 118.675		Ground 118.675
LOC ISHA 108.1	Final Apch Crs 244°	SOONI 2200' (2181')	MDA(H) 740' (721')	Apt Elev 25' TDZE 19'	
MISSED APCH: Climb to 6000' via heading 244° to VIKIX/D3.0 ISHA and RIGHT turn heading 286° and track outbound SAC VOR R-266 to SOLYI and hold, continue climb-in-hold to 6000', or as directed by ATC.					
CAUTION: Missed Approach Minimum climb rate to 3900'.			Gnd speed-Kts	60	120
			Ft per Min	270	540
				180	240
				810	1080
				1350	
Alt Set: hPa		TDZ Elev: 1 hPa	Trans level: FL140		Trans alt: 14000'
1. VOR/DME or radar required. 2. CAUTION: 3011' obstacle located R-247/D12.0 SAC VOR. 3. ALS not installed on Rwy 24R. 4. Use ISHA DME when on the localizer course.					



MSA SAC VOR



Gnd speed-Kts	70	90	100	120	140	160	PAPI	6000'	via 244° hdg	VIKIX
Descent Angle	3.17°	393	505	561	673	785				
MAP at CHANO										

TERPS		STRAIGHT-IN LANDING		CIRCLE-TO-LAND	
		MDA(H) 740' (721')		Not Authorized Southeast of Rwy 06-24	
A		800'- R55 or V1		Max Kts	MDA(H)
B				90	840' (815')
C				120	880' (855')
D				140	1000' (975')
E				165	1020' (995')
					1100'- V3
					1120' (1095')

RKPS/HIN SACHEON

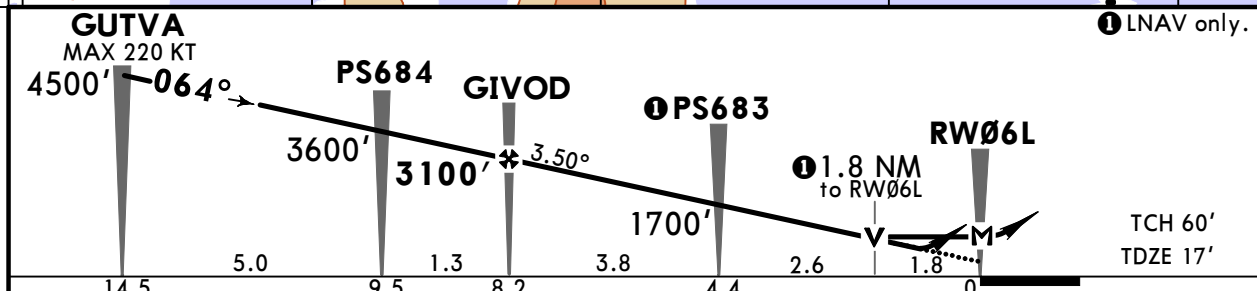
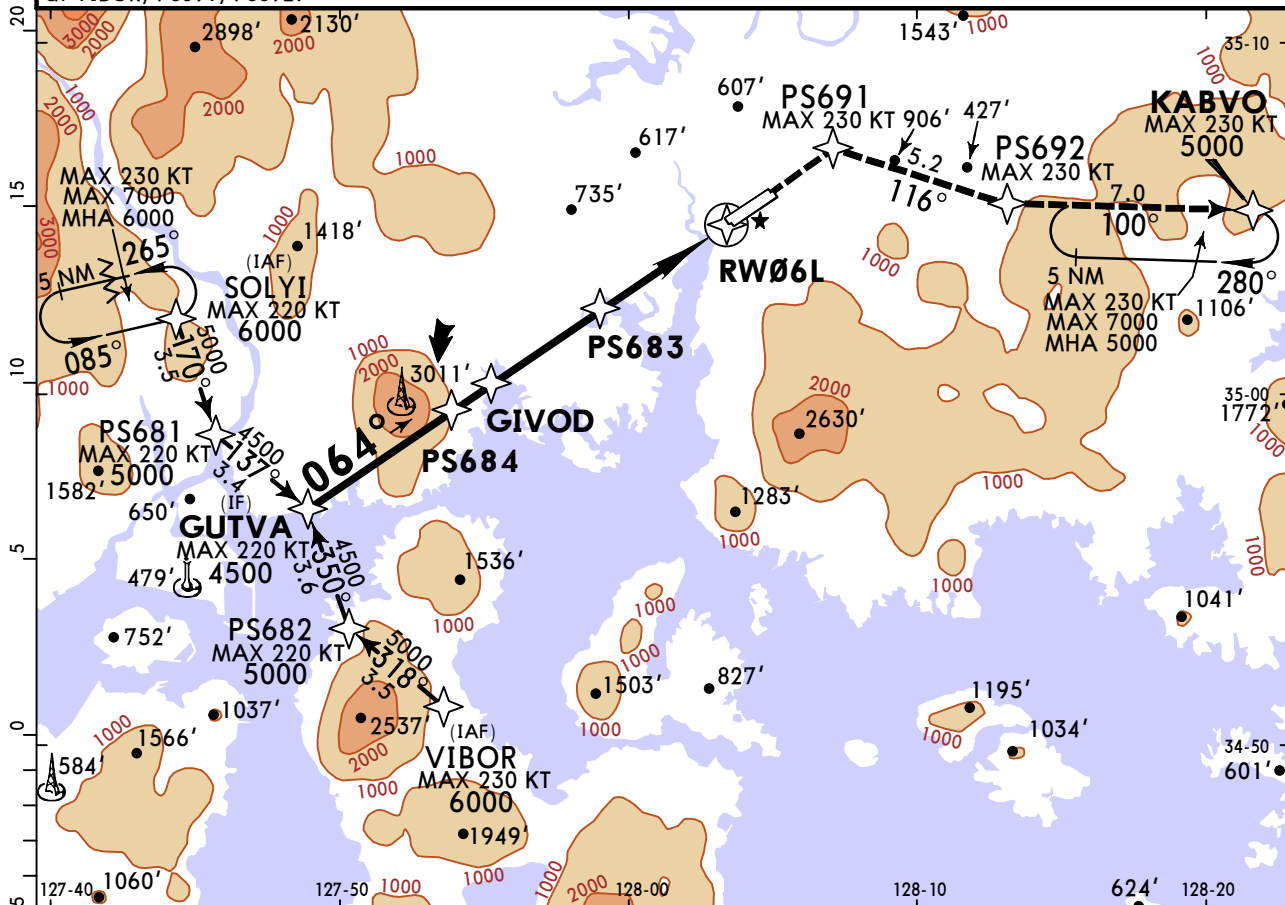


7 JUL 23 (12-1) Eff 12 Jul 1600Z

SACHEON, KOREA RNP Rwy 06L

*ATIS 126.225	SACHEON Approach (R) 135.4		SACHEON Tower 118.675		Ground 118.675													
RNAV	Final Apch Crs 064°	GIVOD 3100' (3083')	LNAV/VNAV DA(H) 624' (607')	Apt Elev 25' TDZE 17'	8400 MSA RW06L													
MISSED APCH: Climb to 5000' on direct to PS691 and track 116° to PS692 and track 100° to KABVO at 5000' and hold.																		
CAUTION: Missed approach requires minimum climb of 290'/NM to 5000' (ATC).			<table border="1"> <tr> <th>KNOTS</th> <td>60</td> <td>120</td> <td>180</td> <td>240</td> <td>TO</td> </tr> <tr> <th>V/V (fpm)</th> <td>290</td> <td>580</td> <td>870</td> <td>1160</td> <td>5000</td> </tr> </table>	KNOTS	60	120	180	240	TO	V/V (fpm)	290	580	870	1160	5000			
KNOTS	60	120	180	240	TO													
V/V (fpm)	290	580	870	1160	5000													
Alt Set: hPa	TDZ Elev: 1 hPa	Trans level: FL140		Trans alt: 14000'														
RNP Apch. RNP 0.3 required.																		

1. GNSS required. 2. DME/DME RNP 0.3 not authorized. 3. CAUTION: 3011' obstacle closed to pattern. 4. For uncompensated Baro-VNAV systems, LNAV/VNAV not authorized below -18°C or above 46°C. 5. VGSI and descent angle not coincident (VGSI Angle 3.7/TCH 60). 6. Do not exceed 220 KT at SOLYI, PS681, PS682, GUTVA and 230 KT at VIBOR, PS691, PS692.



Gnd speed-Kts	70	90	100	120	140	160	PAPI ALSF-I	5000'	PS691	116°	PS692
Glide Path Angle	3.50°	434	557	619	743	991					

TERPS				STRAIGHT-IN LANDING		CIRCLE-TO-LAND	
LNAV/VNAV		LNAV		Circling is not authorized for South East of Rwy 06/24		Max Kts MDA(H)	
DA(H) 624' (607')		MDA(H) 780' (763')					
ALS out		ALS out		Max Kts 90 120 140 165	MDA(H)		
A					780' (755)	800'- V2 1/2	
B	600'- V1 3/8	600'- V1 3/4	800'- V1 3/4		880' (855')	900'- V2 1/2	
C					1020' (995')	1000'- V3	
D				1020' (995')	1000'- V3		

CHANGES: New procedure.

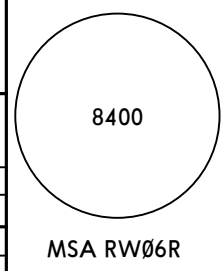
RKPS/HIN SACHEON



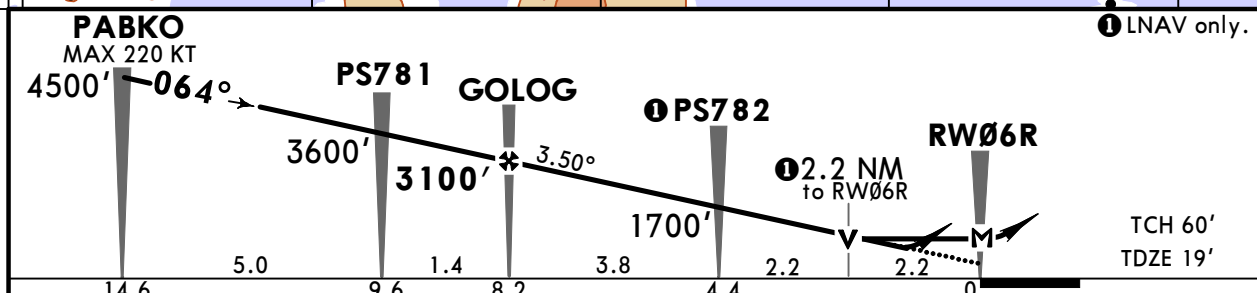
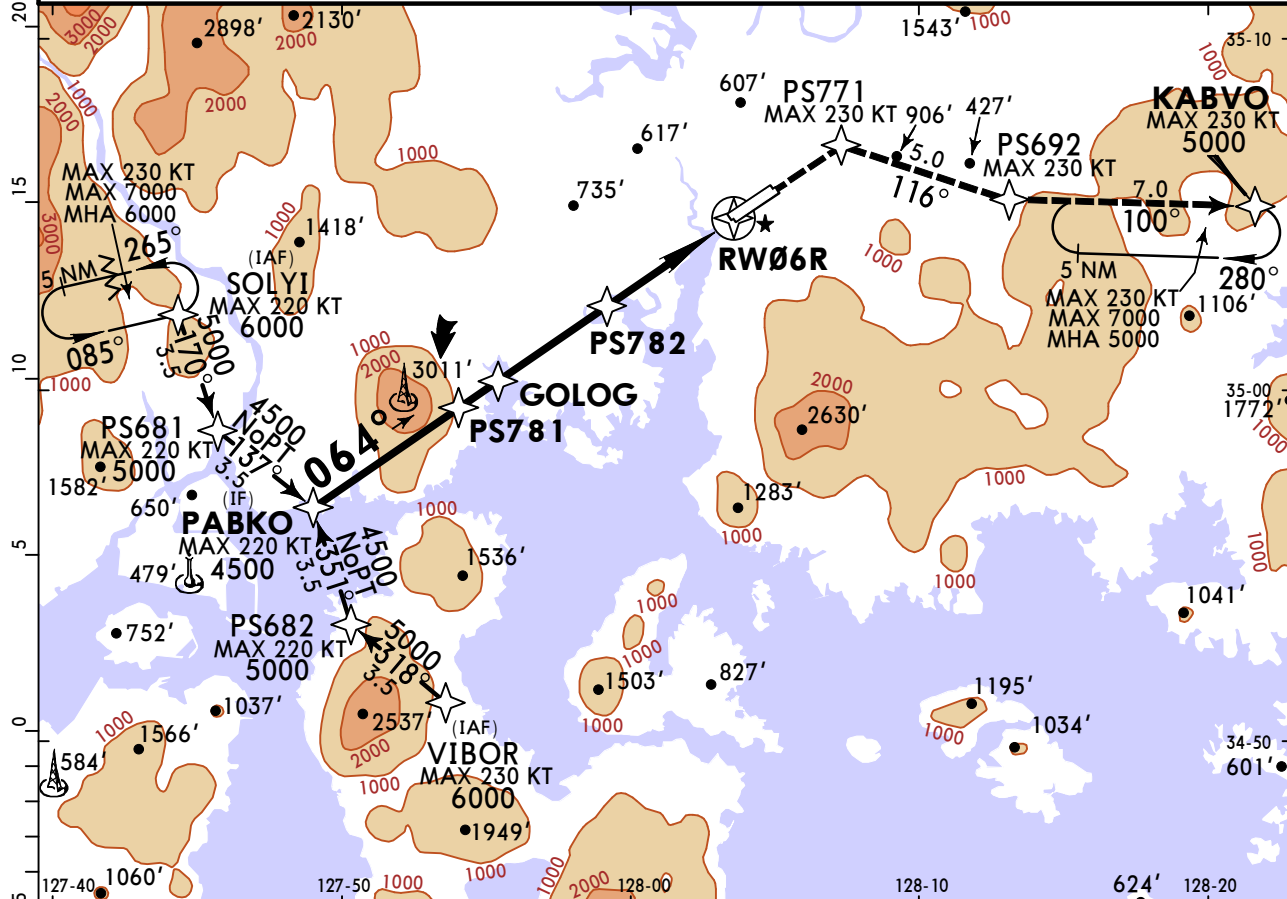
7 JUL 23 (12-2) Eff 12 Jul 1600Z

SACHEON, KOREA RNP Rwy 06R

*ATIS 126.225	SACHEON Approach (R) 135.4	SACHEON Tower 118.675	Ground 118.675
RNAV	Final Apch Crs 064°	GOLOG 3100' (3081')	LNAV/VNAV DA(H) 624' (605')
			Apt Elev 25' TDZE 19'
MISSED APCH: Climb to 5000' on direct to PS771 and track 116° to PS692 and track 100° to KABVO at 5000' and hold.			
CAUTION: Missed approach requires minimum climb of 290'/NM to 5000' (ATC).			
Alt Set: hPa		TDZ Elev: 1 hPa	Trans level: FL140
RNP Apch. RNP 0.3 required.		Trans alt: 14000'	



1. GNSS required. 2. DME/DME RNP 0.3 not authorized. 3. CAUTION: 3011' obstacle closed to pattern. 4. For uncompensated Baro-VNAV systems, LNAV/VNAV not authorized below -18°C or above 46°C. 5. VGSI and descent angle not coincident (VGSI Angle 3.0/TCH 53). 6. Do not exceed 220 KT at SOLYI, PS681, PS682, PABKO and 230 KT at VIBOR, PS771, PS692.



Gnd speed-Kts	70	90	100	120	140	160	PAPI ALSF-I	5000'	PS771	116°	PS692
Glide Path Angle	3.50°	434	557	619	743	867					

TERPS				STRAIGHT-IN LANDING		CIRCLE-TO-LAND	
LNAV/VNAV		LNAV		Circling is not authorized for South East of Rwy 06/24			
DA(H) 624' (605')		MDA(H) 780' (761')					
ALS out		ALS out					
A				Max Kts	MDA(H)		
B	600' - V1 3/8	600' - V1 3/4	800' - V1 3/4	90	780' (755)	800' - V2 1/2	
C			800' - V2 1/2	120	880' (855')	900' - V2 1/2	
D				140	1020' (995')	1000' - V3	
				165	1020' (995')	1000' - V3	

RKPS/HIN SACHEON

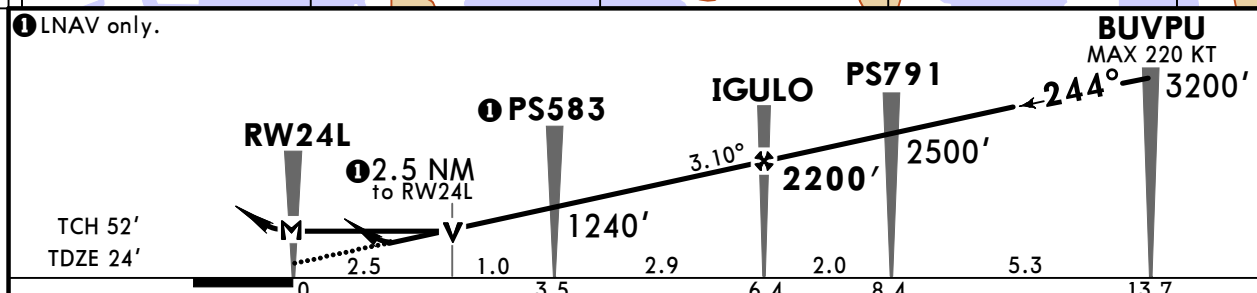
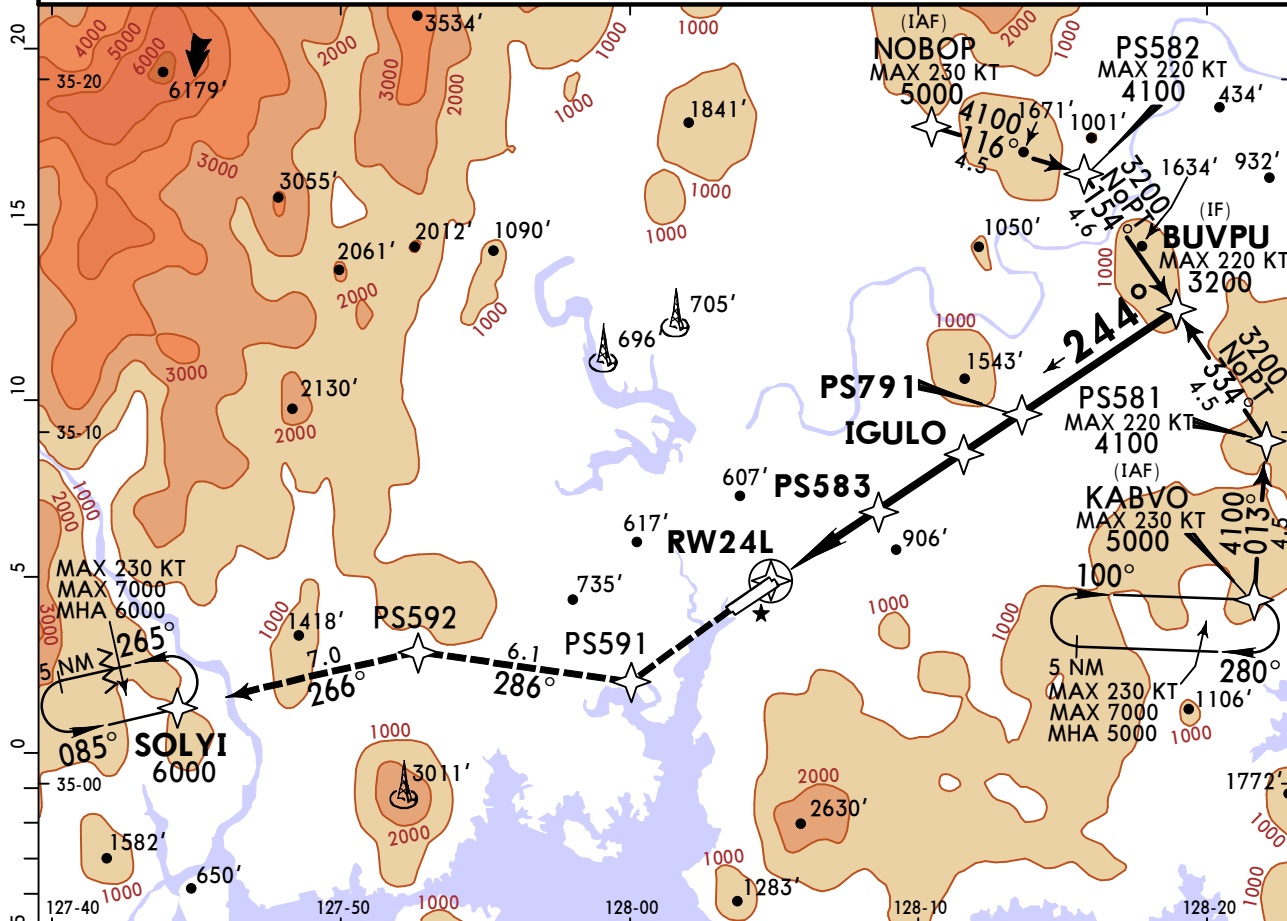


7 JUL 23 (12-3) Eff 12 Jul 1600Z

SACHEON, KOREA RNP Rwy 24L

*ATIS 126.225		SACHEON Approach (R) 135.4		SACHEON Tower 118.675		Ground 118.675	
RNAV	Final Apch Crs 244°	IGULO 2200' (2176')	LNAV/VNAV DA(H) 781' (757')		Apt Elev 25'	TDZE 24'	
MISSED APCH: Climb to 6000' on direct to PS591 and track 286° to PS592 and track 266° to SOLYI at 6000' and hold.							
CAUTION: Missed approach requires minimum climb of 300'/NM to 6000' (ATC).							
Alt Set: hPa		TDZ Elev: 1 hPa	Trans level: FL140		Trans alt: 14000'		
RNP Apch. RNP 0.3 required.							MSA RW24L

1. GNSS required. 2. DME/DME RNP 0.3 not authorized. 3. For uncompensated Baro-VNAV systems, LNAV/VNAV not authorized below -18°C or above 54°C. 4. Do not exceed 220 KT at PS581, PS582, BUVPU and 230 KT at NOBOP KABVO.



Gnd speed-Kts	70	90	100	120	140	160	PAPI SSALS	6000'	PS591	286°	PS592
Glide Path Angle	3.10°	384	494	548	658	768					

TERPS				STRAIGHT-IN LANDING		CIRCLE-TO-LAND	
LNAV/VNAV DA(H) 781' (757')		LNAV MDA(H) 880' (856')		Circling is not authorized for South East of Rwy 24/06			
ALS out		ALS out		Max Kts MDA(H)			
A					90	880' (855') 900' - V2 1/2	
B					120	880' (855') 900' - V2 1/2	
C					140	1020' (995') 1000' - V3	
D					165	1020' (995') 1000' - V3	

RKPS/HIN SACHEON

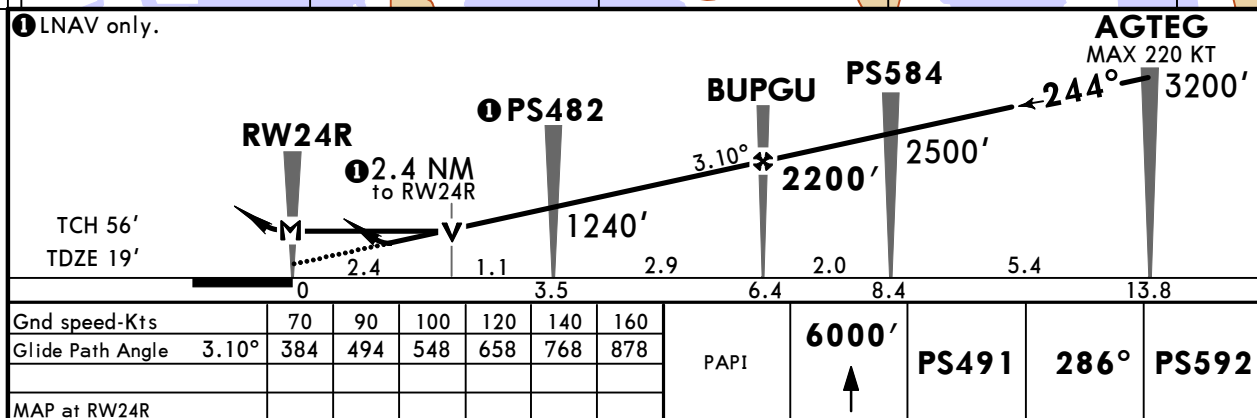
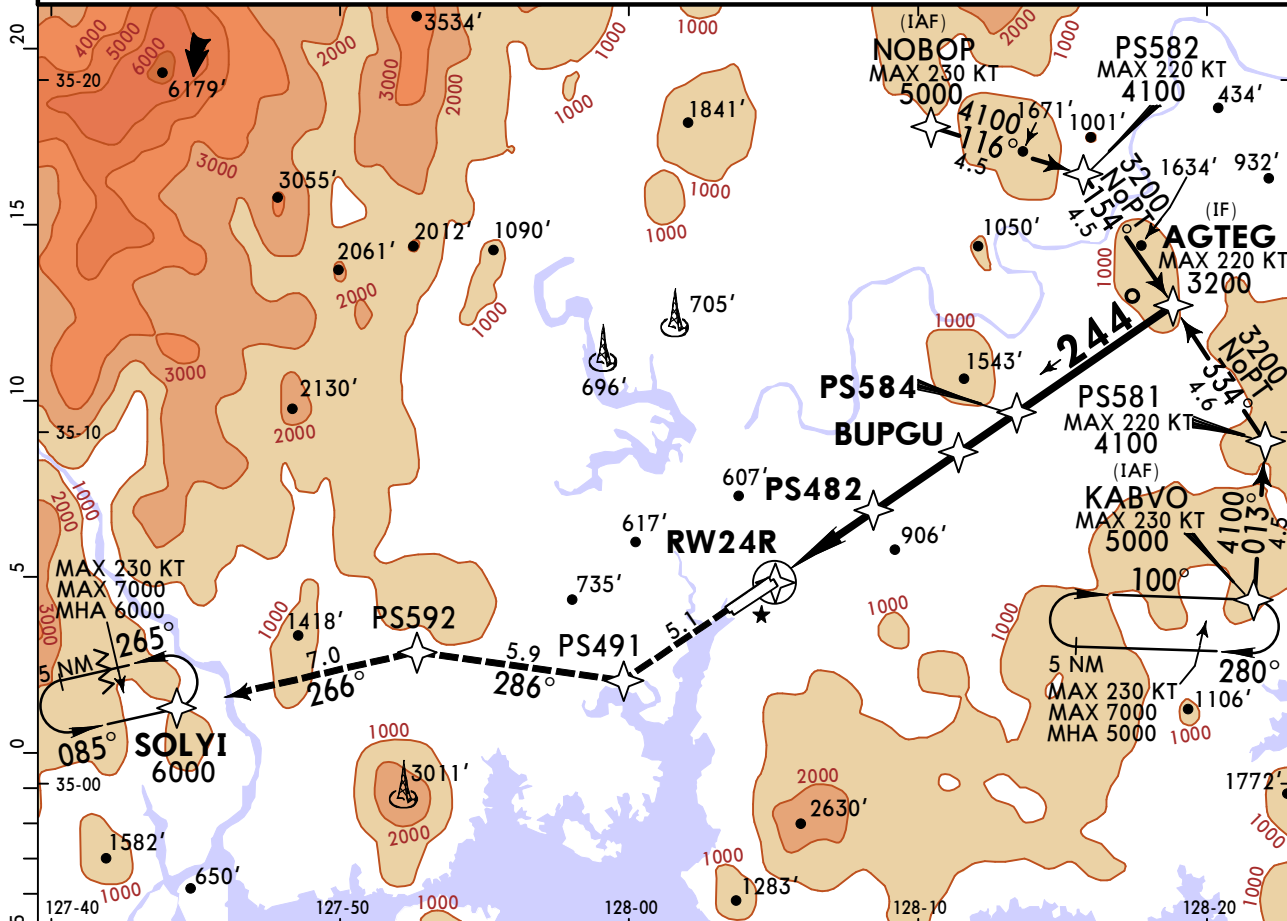


7 JUL 23 (12-4) Eff 12 Jul 1600Z

SACHEON, KOREA RNP Rwy 24R

*ATIS 126.225	SACHEON Approach (R) 135.4	SACHEON Tower 118.675	Ground 118.675
RNAV	Final Apch Crs 244°	BUPGU 2200' (2181')	LNAV/VNAV DA(H) 783' (764')
MISSED APCH: Climb to 6000' on direct to PS491 and track 286° to PS592 and track 266° to SOLYI at 6000' and hold.			Apt Elev 25' TDZE 19'
CAUTION: Missed approach requires minimum climb of 300'/NM to 6000' (ATC).			<p>8400</p> <p>MSA RW24R</p>
Alt Set: hPa	TDZ Elev: 1 hPa	Trans level: FL140	
RNP Apch. RNP 0.3 required.			

1. GNSS required. 2. DME/DME RNP 0.3 not authorized. 3. For uncompensated Baro-VNAV systems, LNAV/VNAV not authorized below -18°C or above 54°C. 4. Do not exceed 220 KT at PS581, PS582, AGTEG and 230 KT at NOBOP, KABVO.



TERPS		STRAIGHT-IN LANDING		CIRCLE-TO-LAND		
LNAV/VNAV DA(H) 783' (764')		LNAV MDA(H) 880' (861')		Circling is not authorized for South East of Rwy 24/06		
TERPS	A	800' - V2 1/2	900' - V2 1/2	Max Kts	MDA(H)	
	B			90	880' (855')	900' - V2 1/2
	C			120	880' (855')	900' - V2 1/2
	D			140	1020' (995')	1000' - V3
				165	1020' (995')	1000' - V3

CHANGES: New procedure.

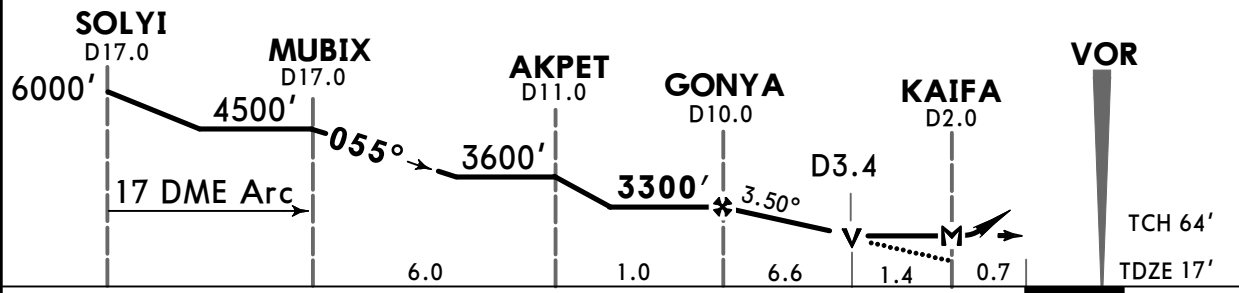
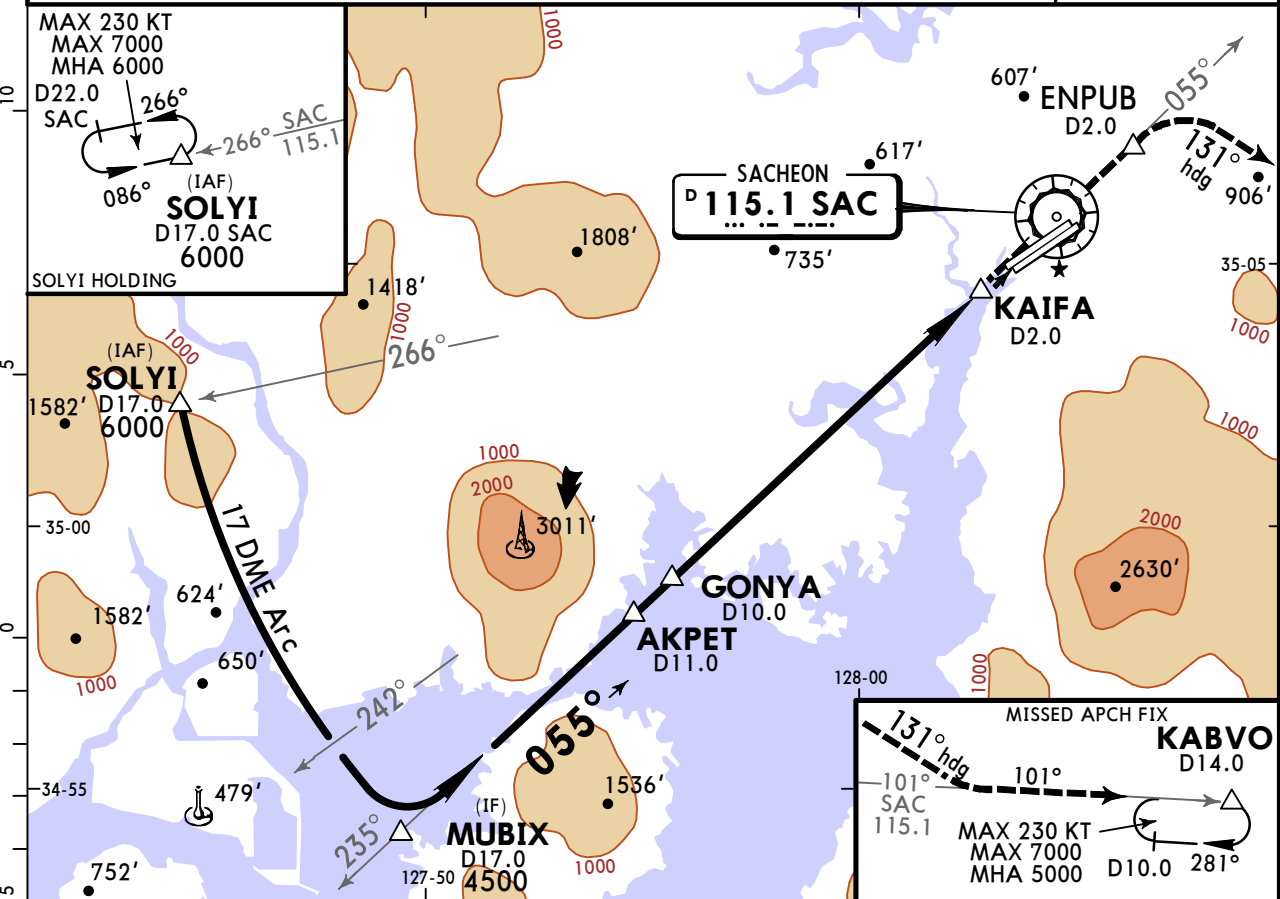
RKPS/HIN SACHEON

JEPPESSEN

SACHEON, KOREA VOR DME Rwy 06L

9 JUN 23
Eff 14 Jun 1600Z (13-1)

*ATIS 126.22		SACHEON Approach (R) 135.4		SACHEON Tower 118.675		Ground 118.675		
VOR SAC 115.1	Final Apch Crs 055°	GONYA 3300' (3283')	MDA(H) 880' (863')	Apt Elev 25' TDZE 17'				
MISSED APCH: Climb to 5000' via track on SAC VOR R-235 to SAC VOR and track on SAC VOR R-055 to ENPUB, heading 131° to intercept SAC VOR R-101 and track SAC VOR R-101 to KABVO and hold, continue climb-in-hold to 5000'.								
Alt Set: hPa _____ TDZ Elev: 1 hPa _____ Trans level: FL140 _____ Trans alt: 14000'								
1. CAUTION: 3011' obstacle located R-247/D12.0 SAC VOR. 2. VGSI and descent angles not coincident (VGSI 3.7° TCH 60').							MSA SAC VOR	



Gnd speed-Kts	70	90	100	120	140	160
Descent Angle	3.50°	434	557	619	743	867
MAP at KAIFA						

PAPI ALSF-I **5000'** SAC via **115.1 R-235** SAC **115.1**

TERPS		STRAIGHT-IN LANDING		Max Kts
		MDA(H) 880' (863')		
A	900'- R40 or V7/8	900'- R55 or V1	90	880' (855')
B	900'- R40 or V7/8	900'- R60 or V1 1/4	120	900' (875')
C	900'- V2	900'- V2 1/2	140	1000' (975')
D	900'- V2	900'- V2 1/2	165	1000'- V3

TERPS		CIRCLE-TO-LAND	
		Not Authorized Southeast of Rwy 06-24	
		MDA(H)	
		880' (855')	900'- V1 1/4
		900' (875')	900'- V1 1/4
		1000' (975')	1000'- V3

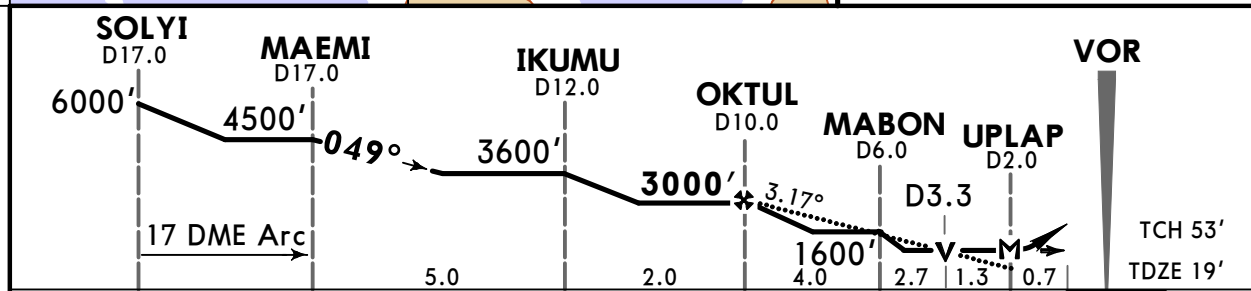
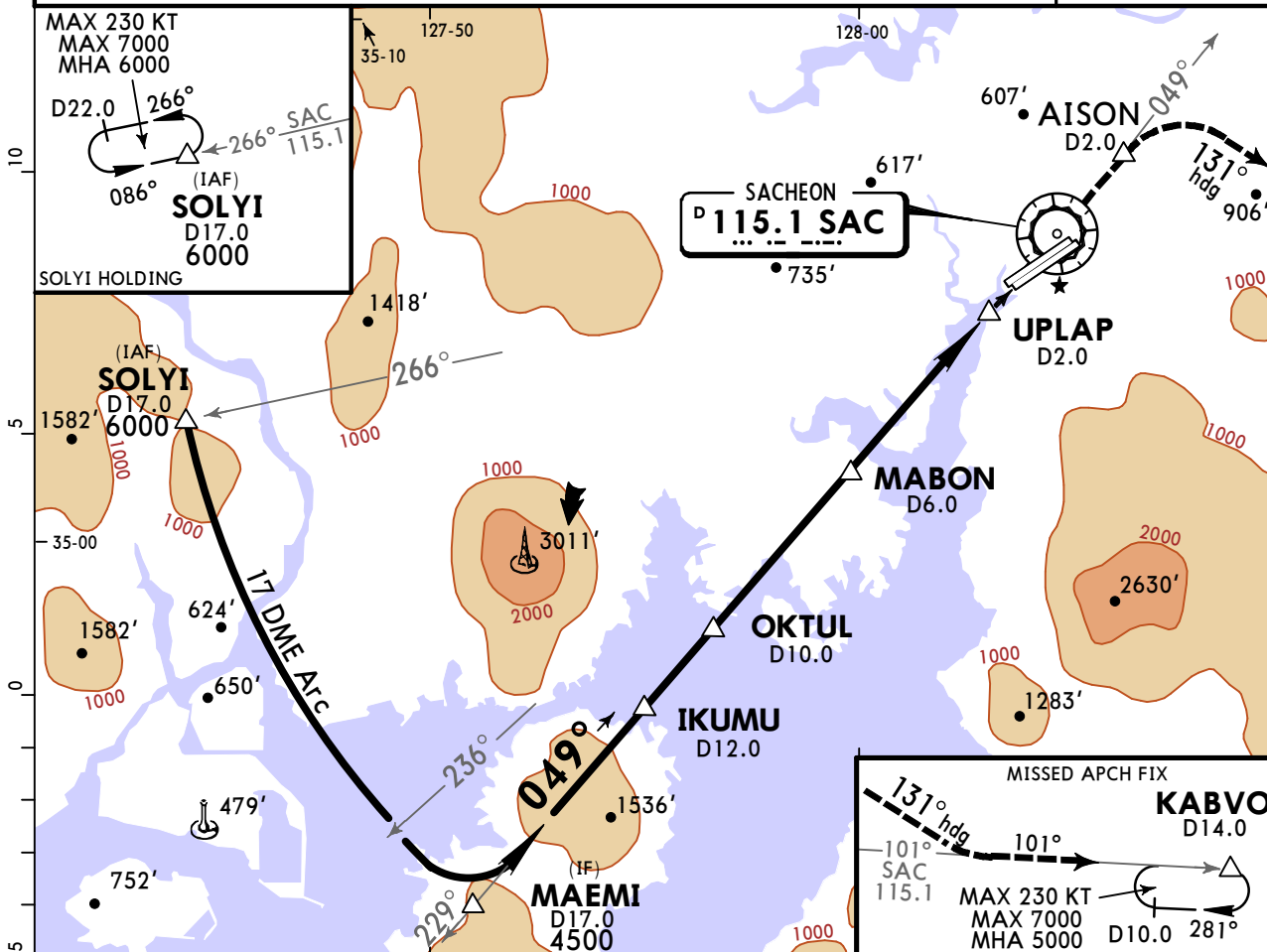
RKPS/HIN SACHEON

9 JUN 23
Eff 14 Jun 1600Z

(13-2)

SACHEON, KOREA VOR DME Rwy 06R

*ATIS 126.22		SACHEON Approach (R) 135.4		SACHEON Tower 118.675		Ground 118.675	
VOR SAC 115.1	Final Apch Crs 049°	OKTUL 3000' (2981')	MDA(H) 700' (681')	Apt Elev 25' TDZE 19'			
MISSED APCH: Climb to 5000' via track on SAC VOR R-229 to SAC VOR and track on SAC VOR R-049 to AISON, then RIGHT turn heading 131° to intercept SAC VOR R-101 and track on SAC VOR R-101 to KABVO and hold, continue climb-in-hold to 5000'.							MSA SAC VOR
Alt Set: hPa TDZ Elev: 1 hPa Trans level: FL140 Trans alt: 14000' CAUTION: 3011' obstacle located R-247/D12.0 SAC VOR.							



Gnd speed-Kts	70	90	100	120	140	160	PAPI ALSF-I	5000'	SAC via 115.1 R-229	SAC 115.1
Descent Angle	3.17°	393	505	561	673	897				
MAP at UPLAP										

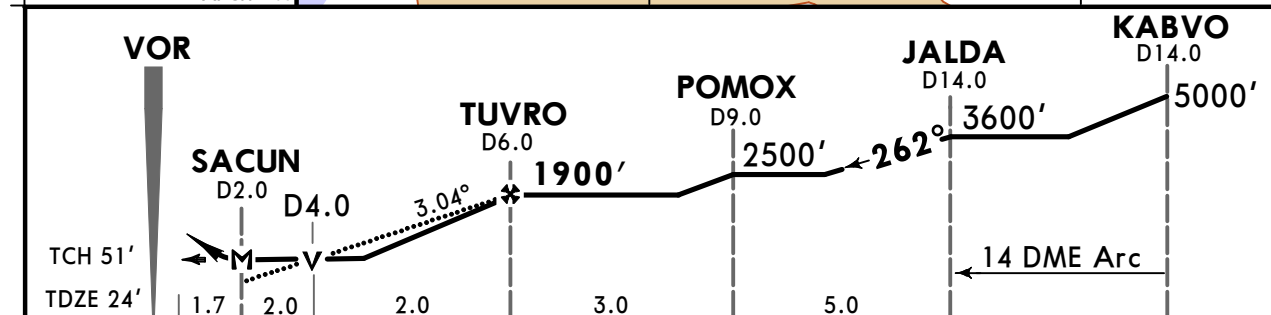
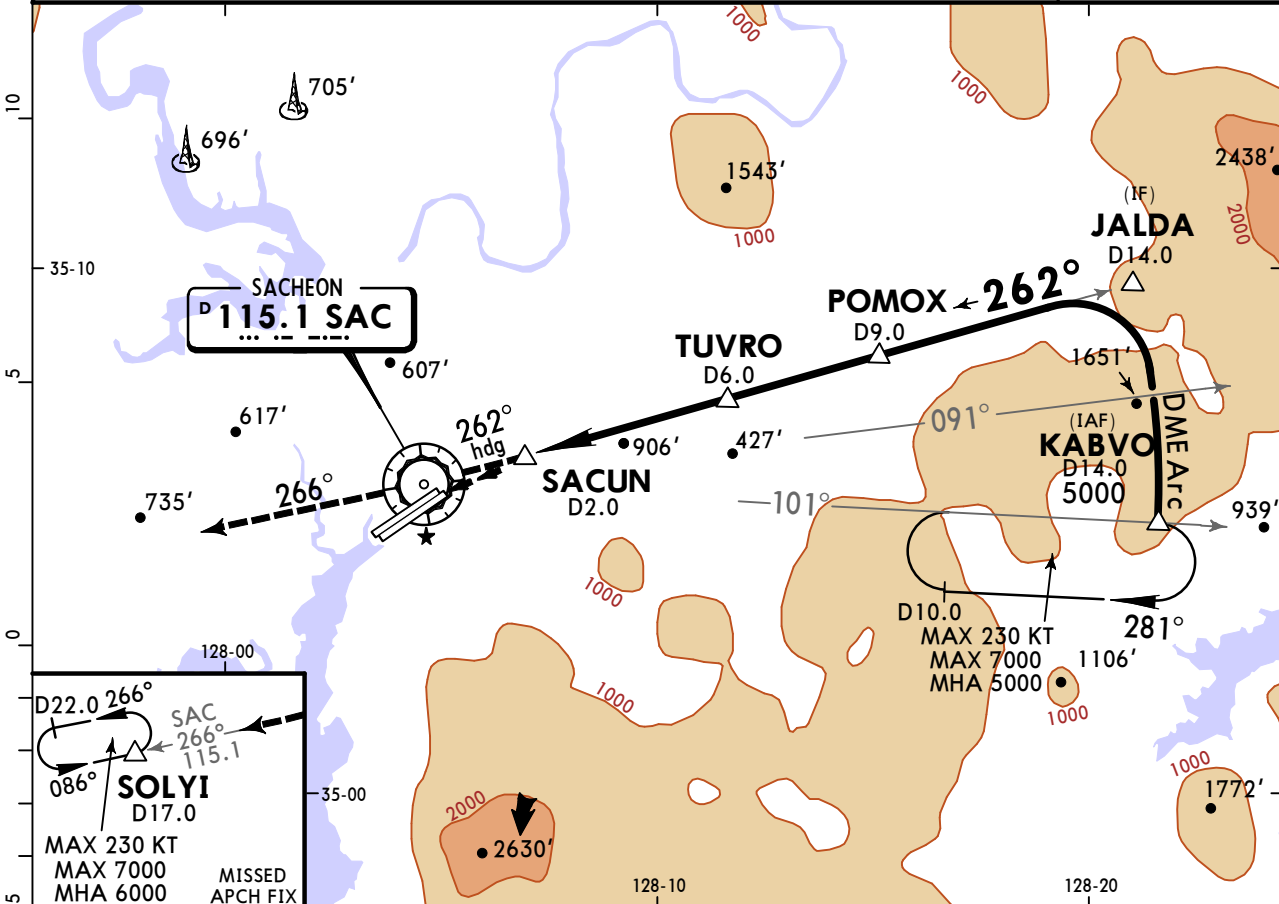
TERPS		STRAIGHT-IN LANDING		CIRCLE-TO-LAND	
		MDA(H) 700' (681')		Not Authorized Southeast of Rwy 06-24	
		ALS out		Max Kts	MDA(H)
A	700'- R40 or V7/8	700'- R55 or V1		90	800' (755') 800'- V1
B				120	900' (875') 900'- V1 1/4
C				140	
D	700'- V1 1/2	700'- V2		165	1000' (975') 1000'- V3

RKPS/HIN SACHEON

9 JUN 23
Eff 14 Jun 1600Z (13-3)

SACHEON, KOREA VOR DME Rwy 24L

*ATIS 126.22	SACHEON Approach (R) 135.4	SACHEON Tower 118.675	Ground 118.675
VOR SAC 115.1	Final Apch Crs 262°	TUVRO 1900' (1876')	MDA(H) 1220' (1196')
MISSED APCH: Climb to 6000' via heading 262° to SAC VOR then track outbound SAC VOR R-266 to SOLYI and hold, continue climb-in-hold to 6000'.			
CAUTION: Missed Approach Minimum climb rate to 4000'.			
Alt Set: hPa	TDZ Elev: 1 hPa	Trans level: FL140	Trans alt: 14000'
CAUTION: 3011' obstacle located R-247/D12.0 SAC VOR.			



Gnd speed-Kts	70	90	100	120	140	160	PAPI SSALS	6000' via hdg 262° SAC 115.1
Descent Angle	3.04°	376	484	538	645	861		
MAP at SACUN								

TERPS		STRAIGHT-IN LANDING		CIRCLE-TO-LAND	
		MDA(H) 1220' (1196')		Not Authorized Southeast of Rwy 06-24	
		ALS out		Max Kts. MDA(H)	
A		1200' - V2		90	1220' (1195') 1200' - V2
B		1200' - V3		120	1220' (1195') 1200' - V3
C				140	
D				165	

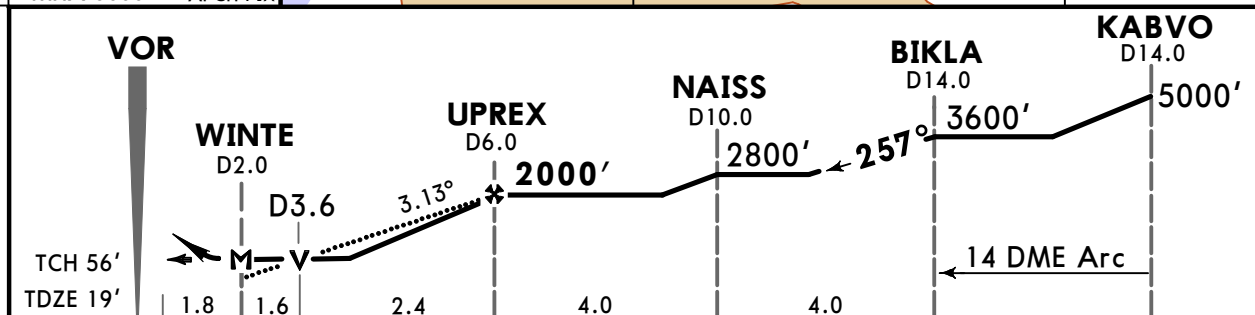
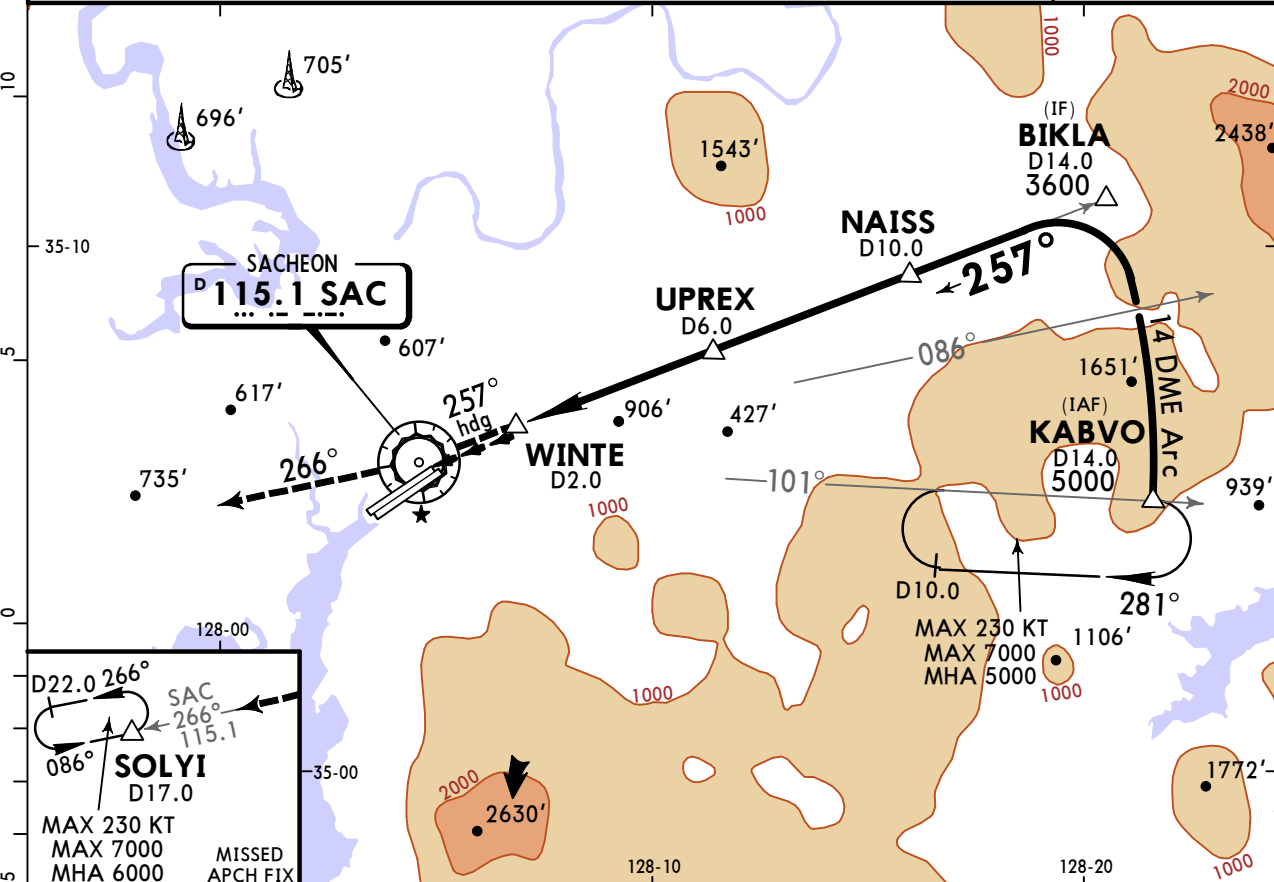
RKPS/HIN SACHEON



SACHEON, KOREA VOR DME Rwy 24R

9 JUN 23
Eff 14 Jun 1600Z (13-4)

*ATIS 126.22		SACHEON Approach (R) 135.4		SACHEON Tower 118.675		Ground 118.675		
VOR SAC 115.1	Final Apch Crs 257°	UPREX 2000' (1981')		MDA(H) 1220' (1201')		Apt Elev 25' TDZE 19'		
MISSED APCH: Climb to 6000' via heading 257° to SAC VOR then track outbound SAC VOR R-266 to SOLYI and hold, continue climb-in-hold to 6000'. CAUTION: Missed Approach Minimum climb rate to 4000'.							<p>MSA SAC VOR</p>	
Alt Set: hPa		TDZ Elev: 1 hPa		Trans level: FL140		Trans alt: 14000'		
1. CAUTION: 3011' obstacle located R-247/D12.0 SAC VOR				2. ALS not installed on Rwy 24R.				



Gnd speed-Kts	70	90	100	120	140	160	PAPI	6000' via hdg 257°	SAC 115.1
Descent Angle	3.13°	388	498	554	665	886			
MAP at WINTE									

TERPS		STRAIGHT-IN LANDING		CIRCLE-TO-LAND	
		MDA(H) 1220' (1201')		Not Authorized Southeast of Rwy 06-24	
A		1200' - V2 1/8		1220' (1195') 1200' - V2 1/8	
B		1200' - V3		1220' (1195') 1200' - V3	
C					
D					

RKPS/HIN



SACHEON, KOREA
RADAR

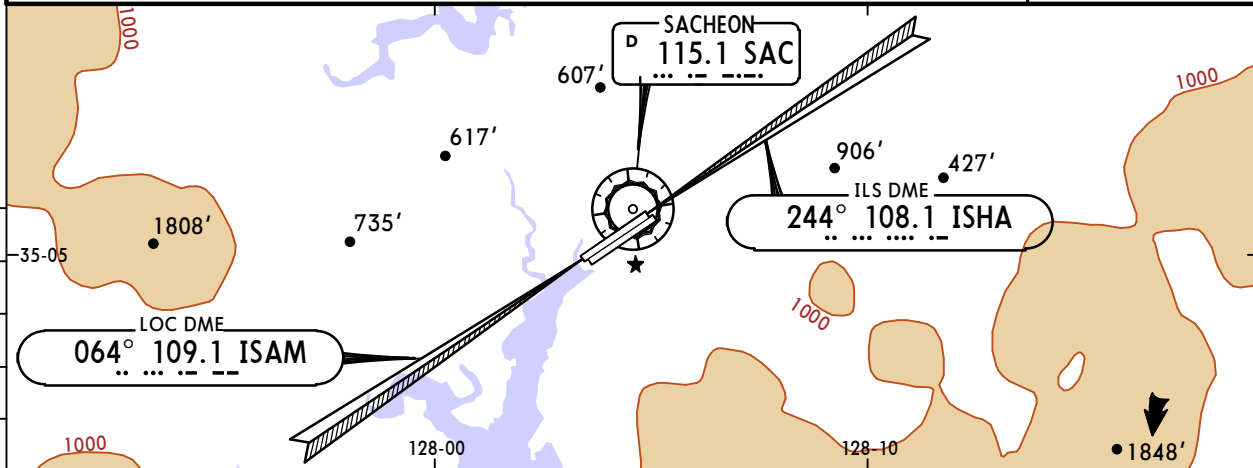
9 JUN 23 (18-1) Eff 14 Jun 1600Z

PAR Rwy 06R, 24L
ASR All Rwy

SACHEON

BRIEFING STRIP™

*ATIS 126.22		SACHEON Approach (R) 135.4		SACHEON Tower 118.675		Ground 118.675		
RADAR	Final Apch Crs By ATC	Minimum Alt No FAF	DA(H)/MDA(H) Refer to Minimums	Apt Elev 25' TDZE -See below		No MSA Published		
Missed Approach-See below								
Alt Set: hPa Apt Elev: 1 hPa Trans level: FL140 Trans alt: 14000'								



MISSED APCH:
PAR Rwy 06R: Climb to 4400' via heading 064° and as directed by ATC.
PAR Rwy 24L: Climb to 1600' via heading 244°, then turn LEFT heading 220° climbing to 4500' and as directed by ATC.
ASR Rwy 06L/R: Climb to 4400' via heading 064° and as directed by ATC.
ASR Rwy 24L: Climb to 1600' via heading 244°, then turn LEFT heading 220° climbing to 4500' and as directed by ATC.
ASR Rwy 24R: Climb to 1600' via heading 244°, then turn LEFT heading 220° climbing to 4000' and as directed by ATC.

RWY 06L TDZE 17'	RWY 06R PAR TCH 51' TDZE 19'	RWY 24L PAR TCH 50' TDZE 24'	RWY 24R TDZE 19'
---------------------	------------------------------------	------------------------------------	---------------------

Gnd speed-Kts	70	90	100	120	140	160	Lighting - Refer to Airport Chart
Rwys 06R, 24L PAR GS	3.00°	372	478	531	637	743	

TERPS		PAR 06R		STRAIGHT-IN LANDING		PAR 24L	
		DA(H) 219' (200')				DA(H) 527' (503')	
		ALS out				ALS out	
A/B	200'- R30 or V5/8	200'- R40 or V3/4		600'- V1 3/4		600'- V1 3/4	
C/D							

TERPS		ASR 06L		STRAIGHT-IN LANDING		ASR 06R		ASR 24L		ASR 24R	
		MDA(H) 780' (763')				MDA(H) 820' (801')		MDA(H) 1240' (1216')		MDA(H) 1220' (1201')	
		ALS out				ALS out		ALS out		ALS out	
A	800'- R40	800'- R55 or V1	800'- R45	800'- R55 or V1	1300'- R55 or V1	1300'- R60 V1 1/4	1200'- R60 V1 1/4	1200'- R60 V1 1/4	1200'- R60 V1 1/4	1200'- R60 V1 1/4	1200'- R60 V1 1/4
B	800'- or V3/4	800'- R60 V1 1/4	800'- or V7/8	800'- R60 V1 1/4	1300'- R60 V1 1/4	1300'- V1 1/2	1200'- V1 1/2	1200'- V1 1/2	1200'- V1 1/2	1200'- V1 1/2	1200'- V1 1/2
C	800'-	800'-	800'-	800'-	1300'- V3	1300'- V3	1200'- V3	1200'- V3	1200'- V3	1200'- V3	1200'- V3
D	V1 3/4	V2 1/2	V1 7/8	V2 1/2							

TERPS		ASR 06L		STRAIGHT-IN LANDING		ASR 06R		ASR 24L		ASR 24R	
		MDA(H)				MDA(H)		MDA(H)		MDA(H)	
Max Kts	90	800'(775')	800'-V1	820'(795')	800'-V1	1240'(1215')	1300'-V1 1/4	1220'(1195')	1200'-V1 1/4	1220'(1195')	1200'-V1 1/4
	120	900'(875')	900'-V1 1/4	900'(875')	900'-V1 1/4	1240'(1215')	1300'-V1 1/2	1220'(1195')	1200'-V1 1/2	1220'(1195')	1200'-V1 1/2
	140	1000'(975')	1000'-V3	1000'(975')	1000'-V3	1240'(1215')	1300'-V3	1220'(1195')	1200'-V3	1220'(1195')	1200'-V3
	165										

Chart changes since cycle 15-2023

ADD = added chart, REV = revised chart, DEL = deleted chart.

ACT	PROCEDURE IDENT	INDEX	REV DATE	EFF DATE
-----	-----------------	-------	----------	----------

SACHEON, (SACHEON - RKPS)

TERMINAL CHART CHANGE NOTICES

No Chart Change Notices for Airport RKPS